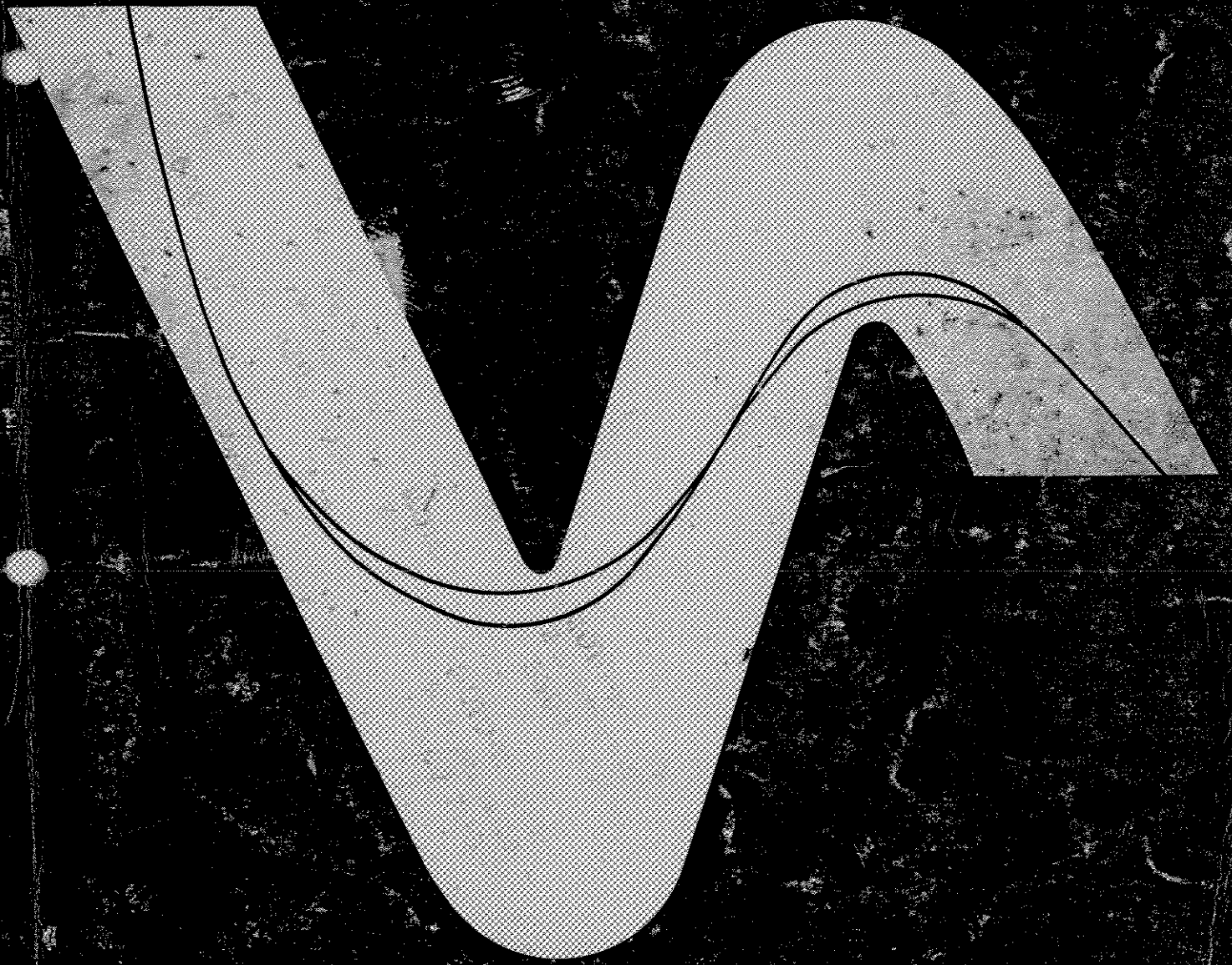


HONDA



PARTS LIST

PARTS LIST

FOR

HONDA

XL250

FOREWORD

This parts list contains all the spare parts for the XL250 model and is to be used when ordering spare parts.

On placing your spare parts order, please inform us the frame number for frame component parts and the engine number for engine component parts together with your order.

The reason for this is that it is necessary to verify that the parts ordered are applicable to the model series intended.

No supplement to this Parts List will be issued. In case of any change to its content, no notification or supplement will be issued for this Parts List.

However, a revised edition of this Parts List will be issued to maintain it up-to-date. The revised edition can be identified by the revision No. on the cover. To check on the latest Parts List revision, please contact your nearest distributor.

January 15, 1973

HONDA MOTOR CO., LTD.

GROUP INDEX

**INSTRUCTION
FOR
USE OF PARTS LIST**

ENGINE GROUP

E-1 ~ E-18

FRAME GROUP

F-1 ~ F-26-2

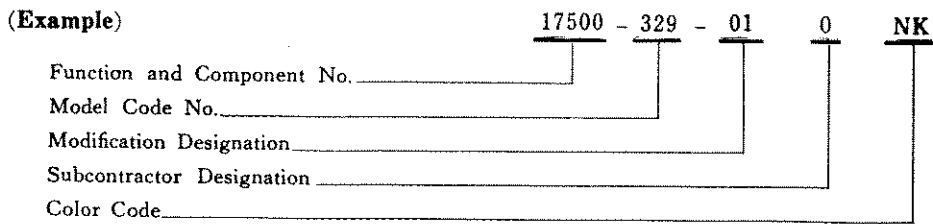
PART NO. INDEX

INSTRUCTION FOR USE OF PARTS LIST

DESCRIPTION OF PARTS LIST

1. Make-up of the Part Number

The following example is the definition of part number.



2. Abbreviations

The abbreviations used in this parts list are as follows.

ASSY. Assembly
 COMP. Complete
 hex. hexagonal
 22T 22 teeth

3. Dimensions

All dimensions are in millimeters except for the steel balls and wheels.

Parts	Example	Interpretation
Bolt (Screw)	6×12	6 mm diameter, 12 mm length
Pin	8×14	8 mm diameter, 14 mm length
O-Ring	9.5×1.6	9.5 mm diameter, 1.6 mm thickness
Oil seal	14×24×5	14 mm inside diameter, 24 mm outside diameter, 5 mm thickness
Tube	5×130	5 mm inside diameter, 130 mm length

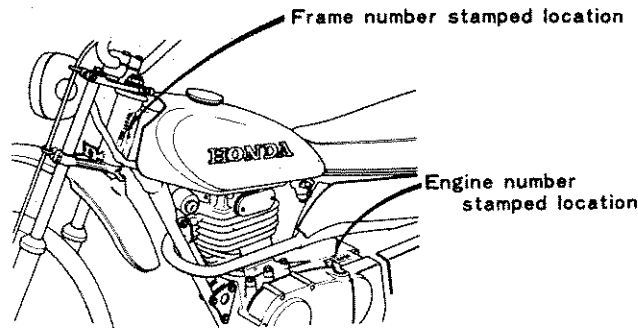
4. Quantity used

In the column "Reqd. No." is shown the quantity of parts used in the respective group.

5. Applicable Serial Number

If there is a production change to a part, the frame or the engine serial number to which this part become effective will be indicated in the "Serial No." column. However, in case the part is used from the initial serial number, its applicable serial number is not shown. The initial serial number for model as follows.

Model Area code	Type Description	Initial serial Engine No.	Initial serial Frame No.
XL250	A	U. S. A. type	SL250SE-1000001~1054738
	E	England type	SL250SE-1054352~
	F	France type	SL250SE-1054351~
	D (Km) (Mile)	General export type	SL250SE-1045729~
	E D	European Direct type	SL250SE-1054508~
	G	Germany type	SL250SE-1058716~



B329-0

6. Color code

The following table indicates the color description of the color codes which are listed in the text.

Color code	Color description	Color code	Color description
NK	Custom silver metallic & Red violet	A	White
		B	Black
NQ	Custom silver metallic	CT	Off black
NR	Phantom black	XW	Chrome plate
		A	Black (Leather)

7. The part number described under the part description supersedes the part number ahead.

8. Parts with * marks

Those parts marked * in the text are items either newly introduced or changed in this issue.

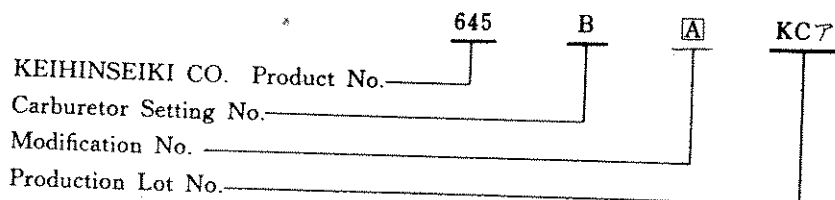
9. This Parts List is compiled as of November 30, 1974

10. Applicable carburetor identification number

The changes to the carburetor assembly and its component parts are indicated by the carburetor identification number.

The identification number is stamped as shown below.

(Example)



The modification No. indicates changes to the carburetor assembly and/or its component parts. The alphabetical letterings framed in a square and when there are any changes to the carburetor, it is advanced in sequence.

When any part of the carburetor assembly needs replacement, please check only the product No. and the modification No.

Part numbers for the parts to be ordered are determined by the carburetor identification number which is listed in the "Serial No." column.

The number listed in the "Serial No." column is a shortened form of the identification No. stamped on the carburetor. The shortened form, such as "645 A", consists of the product No. and the modification No.

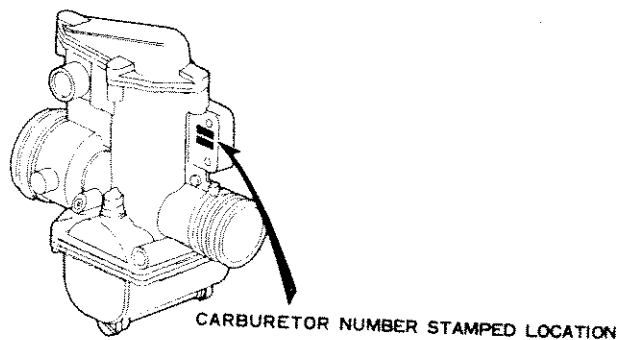
All other numbers and letters are unnecessary, since they do not concern the changes made to the carburetor assembly.

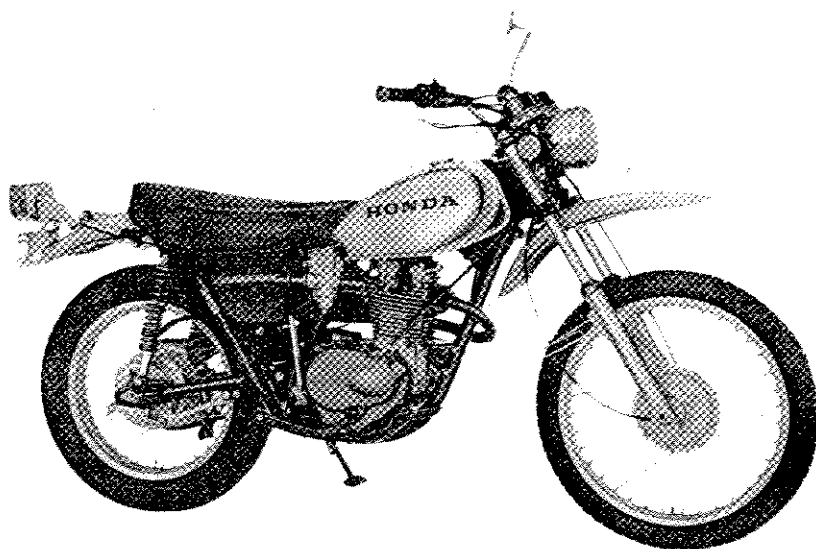
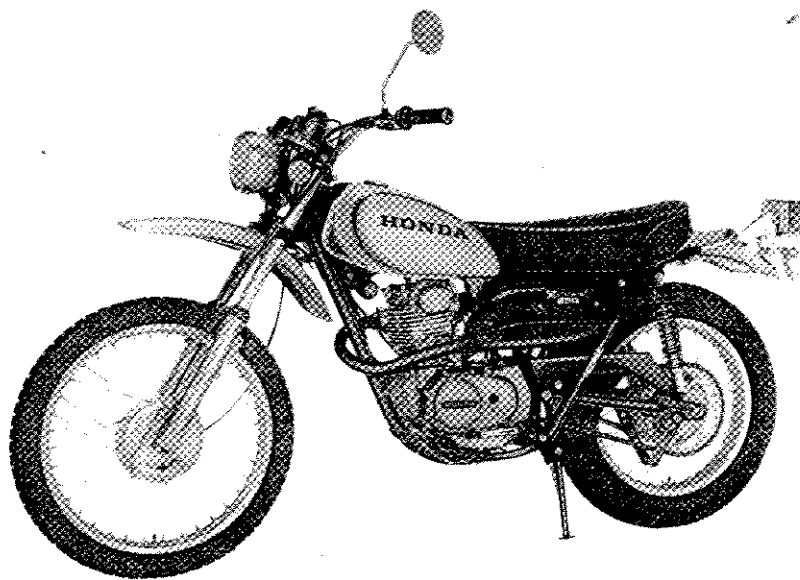
Refer to the following examples.

(Example)

No. information	Applicable for use on all carburetors.
645 <u>A</u>	Applicable only for use on 645 carburetors designated as <u>A</u> .
645 <u>A</u> ~	Applicable for use on 645 carburetors designated as <u>A</u> or subsequent letters.
645 <u>A</u> ~ 645 <u>C</u>	Applicable for use on 645 carburetors designated from letters <u>A</u> through <u>C</u> .

The number is stamped on the carburetor at the following location.





XL250

CONTENTS

ENGINE GROUP

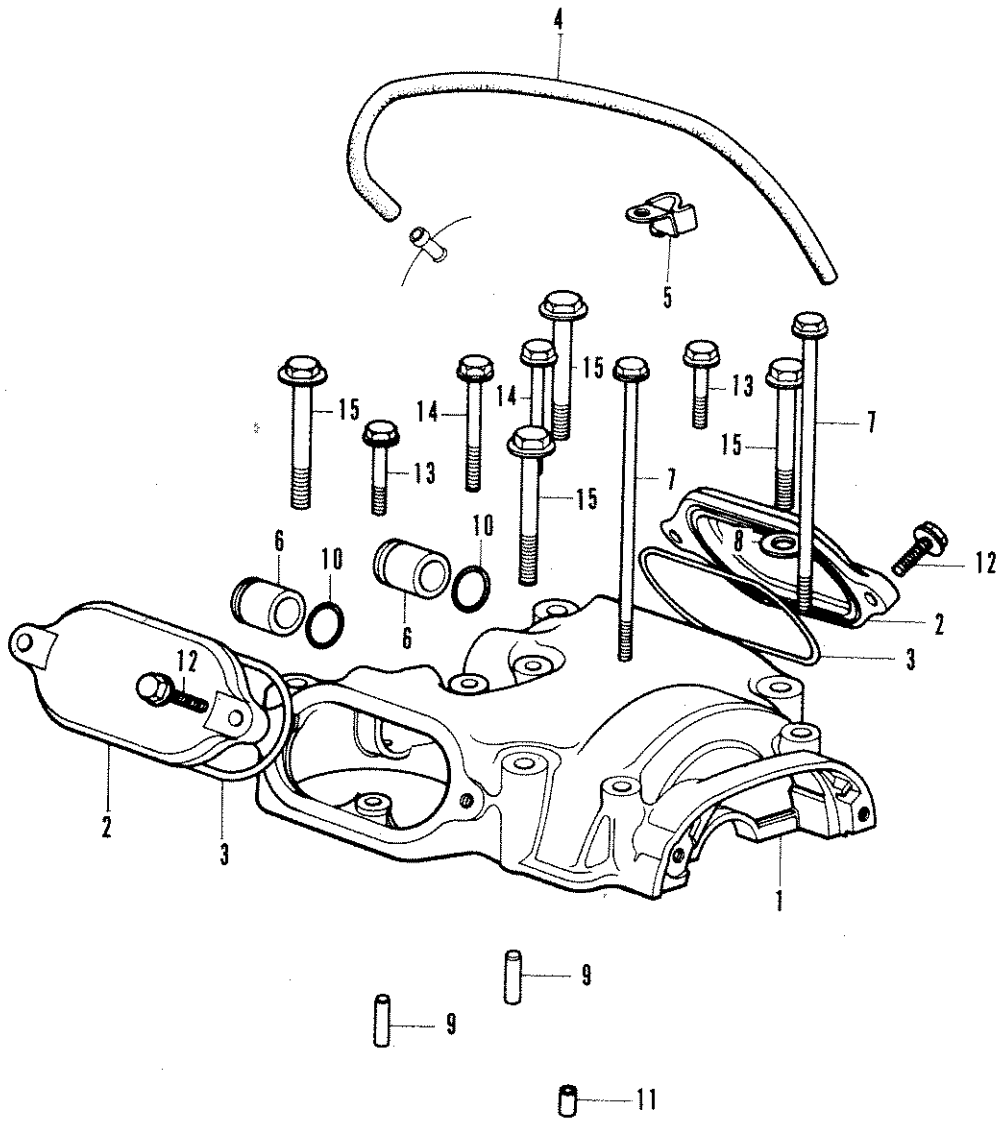
E- 1	Cylinder Head Cover	2
E- 2	Breaker · Advancer	4
E- 3	Camshaft · Valve	6
E- 4	Cylinder Head · Spark Plug	8
E- 5	Cylinder · Piston	10
E- 6	Cam Chain · Tensioner	12
E- 7	Right Crankcase Cover	14
E- 8	Clutch	16
E- 9	Oil Pump · Oil Filter Rotor	18
E-10	Primary Kick Starter	20
E-11	Left Crankcase Cover · Clutch Lever	22
E-12	A. C. Generator	24
E-13	Crankshaft	26
E-14	Transmission	28
E-15	Shift Fork	30
E-16	Upper Crankcase	32
E-17	Lower Crankcase	34
E-18	Carburetor (KEIHIN)	36

FRAME GROUP

F- 1	R/H Handle Switch · Cable	38
F- 2	L/H Handle Switch · Cable	42
F- 3	Steering Handle Pipe · Top Bridge	44
F- 4	Front Fender · Steering Stem	46
F- 5	Front Wheel · Panel	48
F- 6	Front Fork	52
F- 7	Fuel Tank · Cock	54
F- 8	Seat	56
F- 9	Air Cleaner · Cover	58
F-10	Exhaust Muffler	60

F-11	Rear Brake Panel	64
F-12	Rear Wheel	66
F-13	Rear Shock Absorber	70
F-14	Rear Fork · Drive Chain	72
F-15	Rear Fender	76
F-16	Speedometer · Tacometer	78
F-17	Head Light (Used in A)	80
F-17-1	Head Light (Used in E, ED, G)	82
F-17-2	Head Light (Used in F)	84
F-17-3	Head Light (Used in D)	86
F-18	Head Light Stay · Horn	88
F-19	Tail Light (Used in A, F, D)	92
F-19-1	Tail Light (Used in E, ED, F(1058457~))	94
F-19-2	Tail Light (Used in G)	96
F-20	Wire Harness · Switch	98
F-21	Battery · Rectifier	102
F-22	Step · Brake Pedal	104
F-23	Frame Body	108
F-24	Kick Arm · Change Pedal	112
F-25	Tool	114
F-26	Turn Signal Light (Used in A)	116
F-26-1	Turn Signal Light (Used in E, ED, D, F)	118
F-26-2	Turn Signal Light (Used in G)	122
	Parts Number Index	(1)

E-1 Cylinder Head Cover

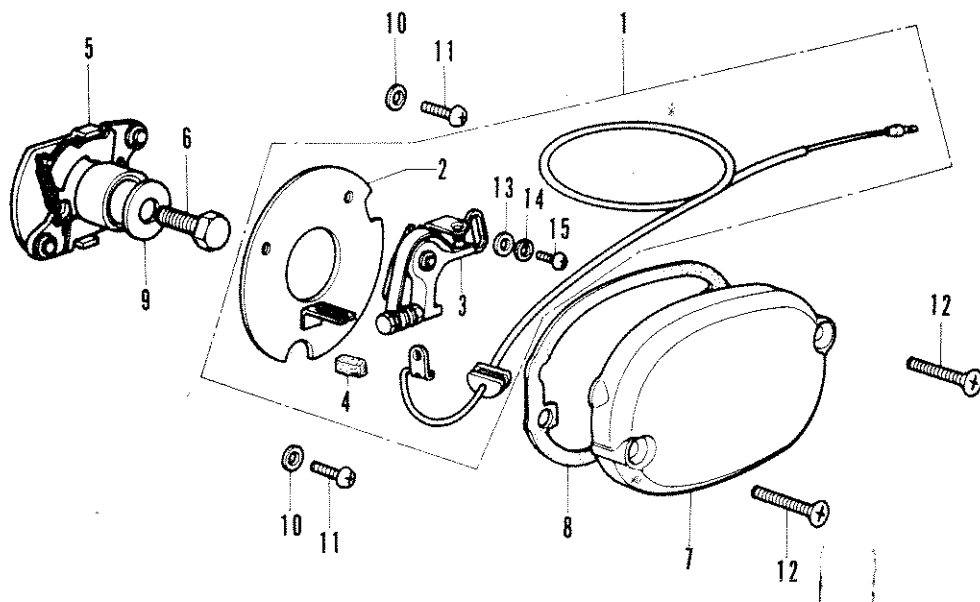


E-1 Cylinder Head Cover

Ref. No.	Part No.	Description	Reqd. No. XL250	Serial No.	Area Code
1	12310-329-030	COVER, CYLINDER HEAD	1	1062704	
	12310-329-770	COVER, CYLINDER HEAD	1	2000001	
2	12351-329-000	COVER, TAPPET ADJUSTING HOLE	2	1062704	
	12351-329-770	COVER, TAPPET ADJUSTING HOLE	2	2000001	
3	12392-329-000	PACKING, TAPPET COVER	2		
4	15772-356-000	TUBE, POINT BREATHER	1	2000001	
5	32111-333-000	CLAMPER A, CORD	1	2000001	
6	90011-329-000	PLUG, ROCKER ARM SHAFT 90011-356-000	2	1060286	
	90011-356-000	PLUG, ROCKER ARM SHAFT	2	1060287	
7	90048-329-000	BOLT, FLANGE, 6X131	2		
8	90441-286-000	WASHER, SEALING, 8MM	1		
9	90708-329-000	PIN, DOWEL, 6X20.5	2		
10	91306-329-000	O-RING, 16X1.9	2		
11	94301-06100	PIN A, DOWEL, 6X10	1		
12	95700-06020	BOLT, FLANGE, 6X20	4		
13	95700-06032	BOLT, FLANGE, 6X32	2		
14	95700-06055	BOLT, FLANGE, 6X55	2		
15	95700-08055	BOLT, FLANGE, 8X55	4		

ENGINE GROUP

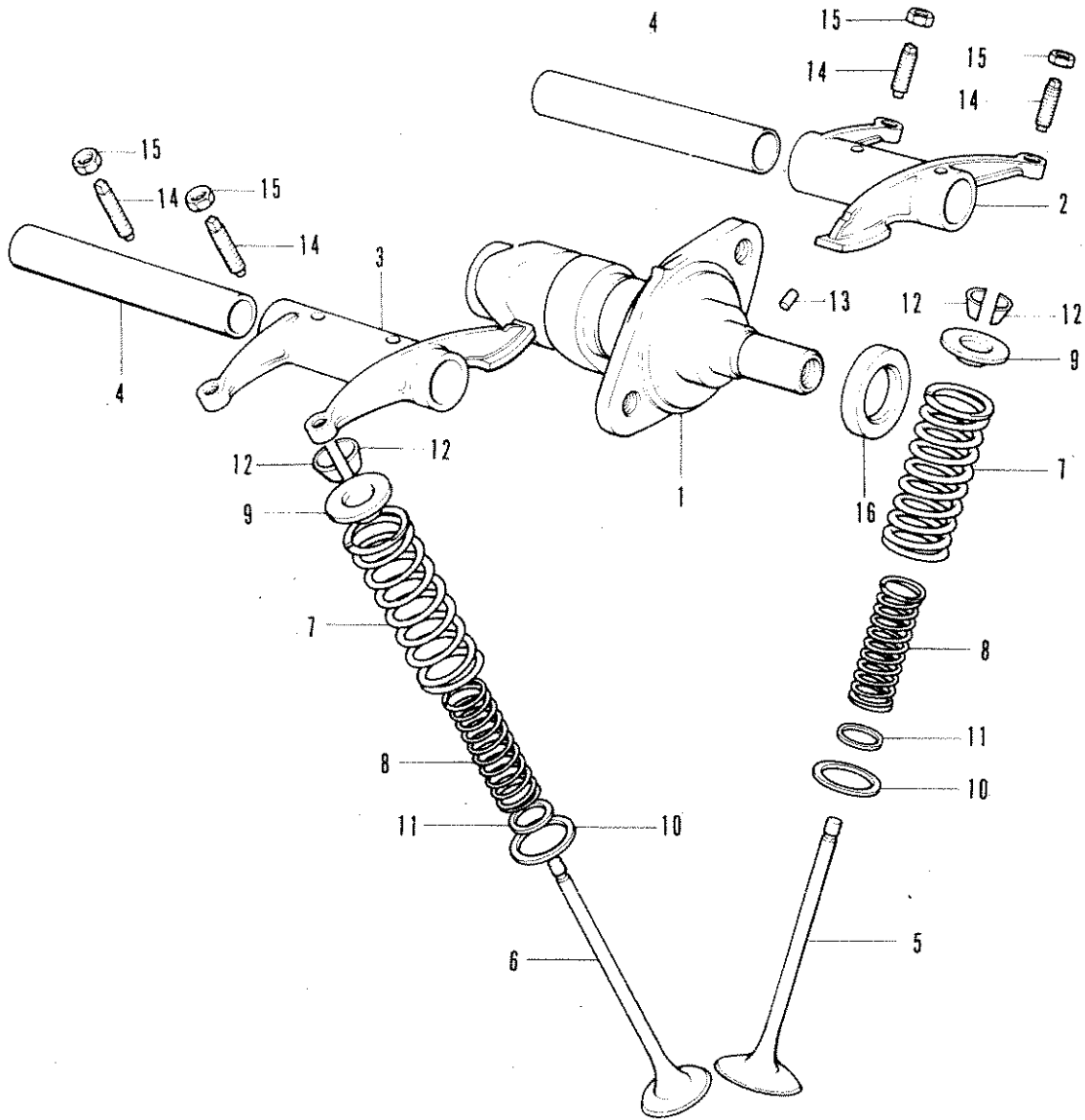
E-2 Breaker · Advancer



E-2 Breaker · Advancer

Ref. No.	Part No.	Description	Reqd. No. XL250	Serial No.	Area Code
1	30200-329-004	BREAKER ASSY., CONTACT (ND)	1		
2	30201-329-004	PLATE, CONTACT BREAKER BASE	1		
3	30202-107-004	BREAKER, CONTACT (ND)	1		
4	30205-028-004	FELT, OIL (ND)	1		
5	30220-329-024	ADVANCER ASSY., SPARK (ND)	1		
6	30225-246-004	BOLT, SPARK ADVANCER SETTING	1		
7	30370-329-000	COVER, CONTACT BREAKER	1		
8	30372-329-000	GASKET, CONTACT BREAKER COVER	1		
9	90417-035-303	WASHER, SHIFT DRUM SIDE	1		
10	90482-028-000	WASHER, 5MM	2		
11	93500-05010-0A	SCREW, PAN, 5X10	2		
12	93700-05022-0B	SCREW, OVAL, 5X7.2	2		
13	94101-04000	WASHER, PLAIN, 4MM	2		
14	94111-04000	WASHER, SPRING, 4MM	2		
15	99500-04007-0A	SCREW, HOLLOW PAN, 4X7	2		

E-3 Camshaft · Valve



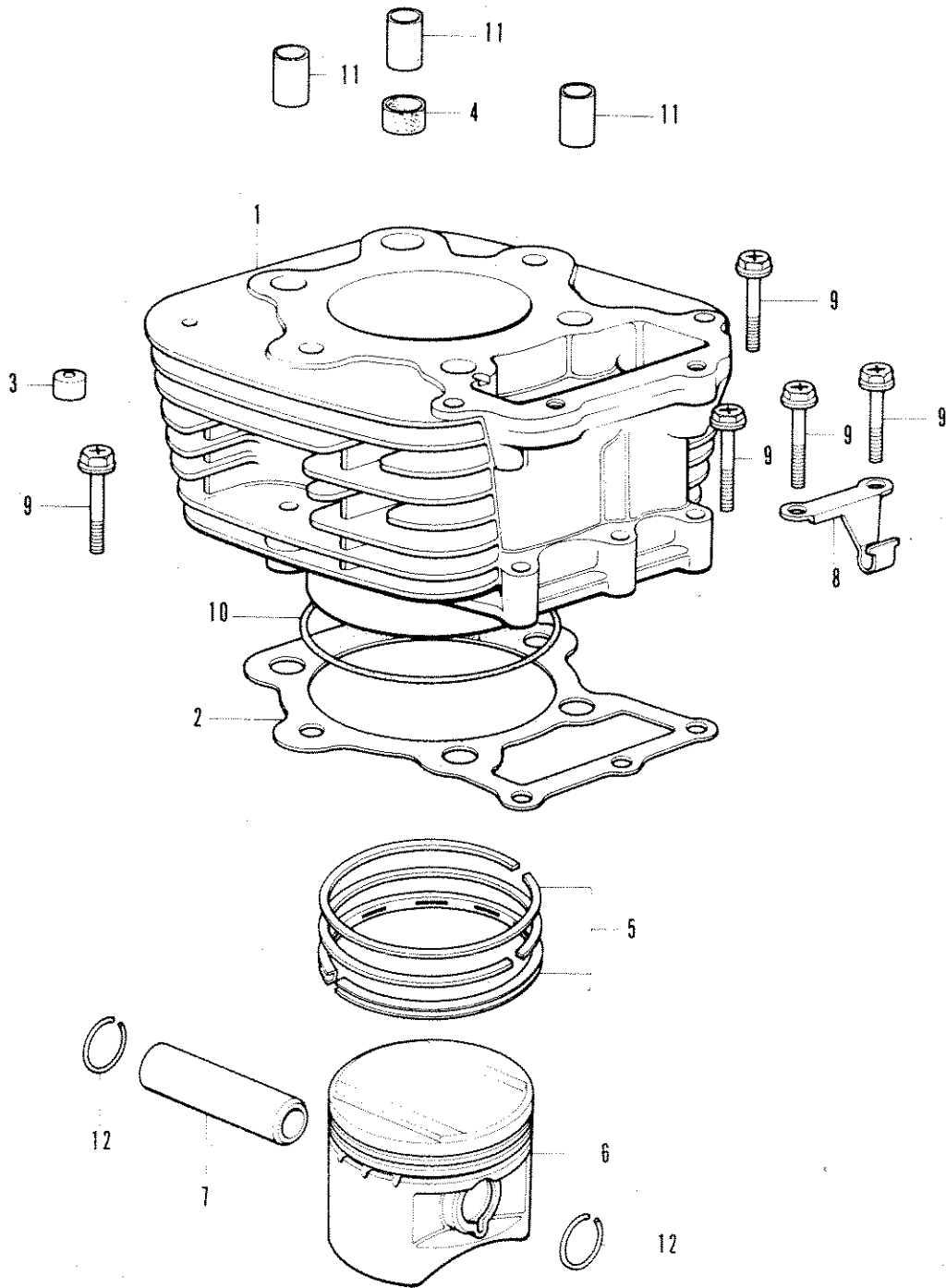
E-3 Camshaft • Valve

Ref. No.	Part No.	Description	Reqd. No. XL250	Serial No.	Area Code
1	14101-329-040	CAMSHAFT	1		
2	14431-329-010	ARM, INLET VALVE ROCKER	1		
3	14441-329-000	ARM, EXHAUST VALVE ROCKER	1		
4	14451-329-000	SHAFT, VALVE ROCKER ARM	2		
5	14711-329-010	VALVE, INLET	2		
6	14721-329-000	VALVE, EXHAUST	2		
7	14751-329-005	SPRING, VALVE (OUTER)	4		
8	14761-329-005	SPRING, VALVE (INNER)	4		
9	14771-329-000	PETAINER, VALVE SPRING	4		
10	14775-329-000	SEAT, VALVE SPRING OUTER	4		
11	14776-329-000	SEAT, VALVE SPRING INNER	4		
12	14781-107-020	COTTER, VALVE	8		
13	30905-216-000	PIN, CAMSHAFT, 5X5.	1		
14	90012-200-000	SCREW, TAPPET ADJUSTING 90012-333-000	4	1047381	
	90012-333-000	SCREW, TAPPET ADJUSTING	4	1047382	
15	90206-246-000	NUT, TAPPET ADJUSTING	4		
16	91207-329-003	OIL SEAL, 15X27.7	1		

E-4 Cylinder Head • Spark Plug

Ref. No.	Part No.	Description	Reqd.No. XL250	Serial No.	Area Code
1	12021-329-300	GUIDE, INLET VALVE	2		
2	12023-329-300	GUIDE, EXHAUST VALVE	4	1056787	
	12023-329-310	GUIDE, EXHAUST VALVE	1	1056788	
3	12200-329-060	HEAD COMP., CYLINDER 12200-329-070	4	1056787	
	12200-329-070	HEAD COMP., CYLINDER	1	1056788	1062704
	12200-329-770	HEAD COMP., CYLINDER	1	2000001	
4	12209-323-005	SEAL, VALVE STE 12209-333-005	4	2000548	
	12209-333-005	SEAL, VALVE STE	4	2000549	
5	12209-329-000	CAP, SEALING	1		
6	12251-329-010	GASKET, CYLINDER HEAD	1	1062704	
	12251-329-770	GASKET, CYLINDER HEAD	1	2000001	
7	12620-329-000	RUBBER, INSERT	8	1062704	
8	16211-329-020	INSURATOR, CARBURETOR	1		
9	17255-329-000	BAND A, CLEANER CONNECTING TURE	1		
10	18462-720-000	NUT, FLANGE, 6MM /1062704(4)	2		
11	90032-329-000	BOLT, CYLINDER STUD, 8 MM	1	1062704	
	90032-329-770	BOLT, CYLINDER FLANGE, 8MM	1	2000001	
12	90033-329-000	BOLT, CYLINDER FLANGE, 8 MM	1	1062704	
	90033-329-770	BOLT, CYLINDER FLANGE, 12X8	1	2000001	
13	90201-329-000	NUT, FLANGE, 10 MM	2		
14	90202-329-000	NUT, FLANGE CAP, 10MM	2		
15	90236-300-000	NUT, 8MM	2		
16	90441-329-000	WASHER, SEALING, 10MM	2		
17	91301-200-000	O-RING, 10X1.6	4		
18	91311-329-000	O-RING, 38X2.4	1		
19	91326-590-010	O-RING, 15X3	1		
20	92000-06016	BOLT, HEX., 6X16	2	2000001	
21	92700-06040	BOLT, STUD, 6X40	2		
22	92700-08045	BOLT, STUD, 8X45	2		
23	92712-06028	BOLT, STUD, 6X28	2	1062704	
24	93500-05020-06	SCREW, PAN, 5X20	1		
25	98069-38710	PLUG, SPARK (D-RES-1 CK)	1		
	98069-57711	PLUG, SPARK (D-RES-1 CK) (OPTIONAL PART)	1		
	98069-57723	PLUG, SPARK (X-2RES NI) (OPTIONAL PART)	1	1058616	
	98069-58721	PLUG, SPARK (X-2RES NI)	1	1058616	

E-5 Cylinder • Piston

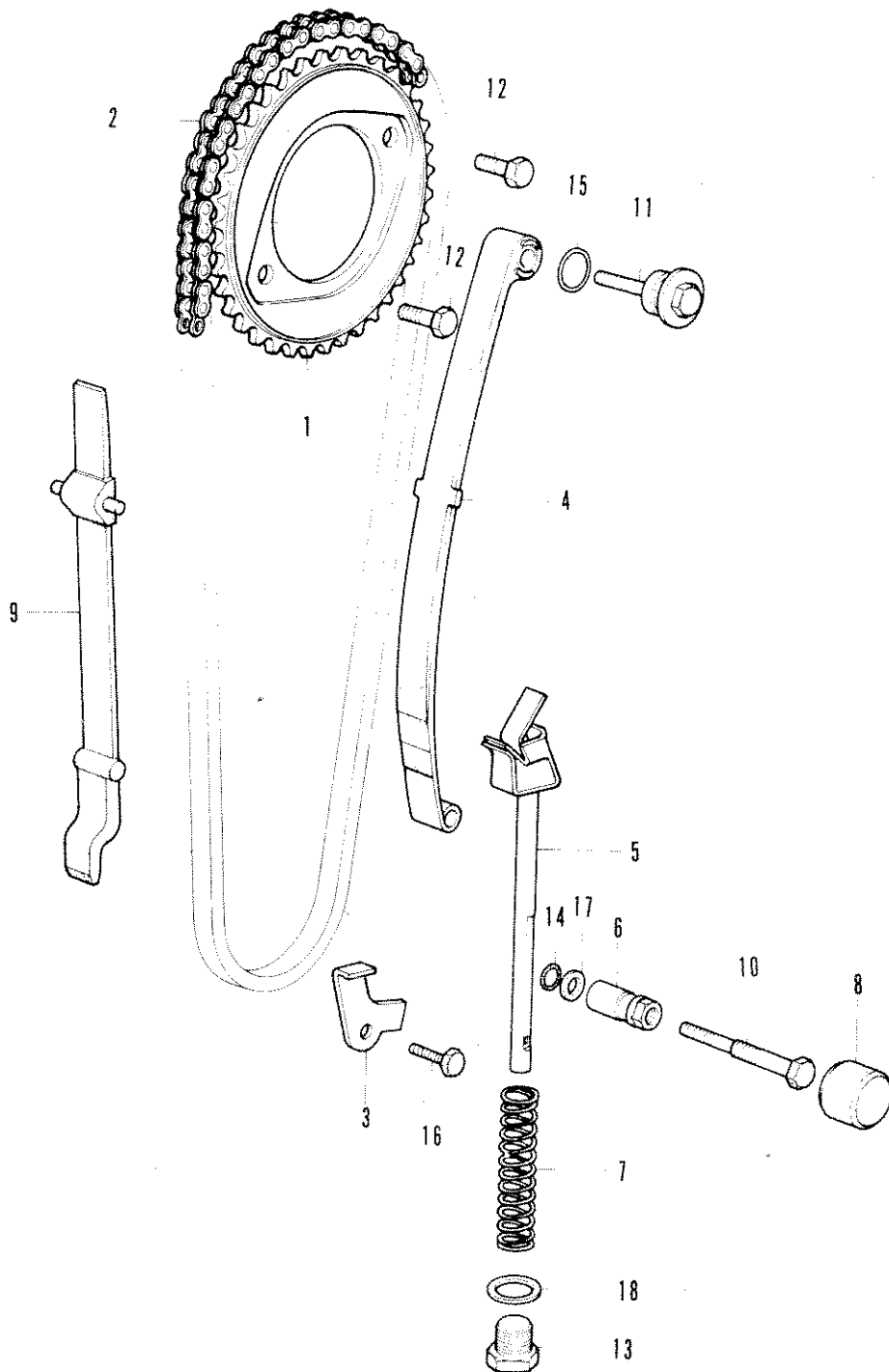


B 329-5A

E-5 Cylinder • Piston

Ref. No.	Part No.	Description	Reqd. No. XL250	Serial No.	Area Code
1	12100-329-010	CYLINDER COMP.	1	1062704	
	12100-329-770	CYLINDER COMP.	1	2000001	
2	12191-329-010	GASKET, CYLINDER	1	1062704	
	12191-329-770	GASKET, CYLINDER	1	2000001	
3	12620-329-000	RUBBER, INSERT	3		
4	12909-283-000	GASKET, CYLINDER STD 12909-333-000	1	2009778	
	12909-333-000	GASKET, CYLINDER STD	1	2009779	
5	13011-329-003	RING SET, PISTON (STD. NIPPON)	1		
	13011-329-004	RING SET, PISTON (STD. RIKEN)	1		
	13011-329-005	RING SET, PISTON (STD. TEIKOKU)	1		
	13021-329-003	RING SET, PISTON (0.25 NIPPON) (OPTIONAL PART)	1		
	13021-329-004	RING SET, PISTON (0.25 RIKEN) (OPTIONAL PART)	1		
	13021-329-005	RING SET, PISTON (0.25 TEIKOKU) (OPTIONAL PART)	1		
	13031-329-003	RING SET, PISTON (0.50 NIPPON) (OPTIONAL PART)	1		
	13031-329-004	RING SET, PISTON (0.50 RIKEN) (OPTIONAL PART)	1		
	13031-329-005	RING SET, PISTON (0.50 TEIKOKU) (OPTIONAL PART)	1		
	13041-329-003	RING SET, PISTON (0.75 NIPPON) (OPTIONAL PART)	1		
	13041-329-004	RING SET, PISTON (0.75 RIKEN) (OPTIONAL PART)	1		
	13041-329-005	RING SET, PISTON (0.75 TEIKOKU) (OPTIONAL PART)	1		
	13051-329-003	RING SET, PISTON (1.00 NIPPON) (OPTIONAL PART)	1		
	13051-329-004	RING SET, PISTON (1.00 RIKEN) (OPTIONAL PART)	1		
	13051-329-005	RING SET, PISTON (1.00 TEIKOKU) (OPTIONAL PART)	1		
6	13101-329-000	PISTON (STD.)	1		
	13102-329-000	PISTON (0.25) (OPTIONAL PART)	1		
	13103-329-000	PISTON (0.50) (OPTIONAL PART)	1		
	13104-329-000	PISTON (0.75) (OPTIONAL PART)	1		
	13105-329-000	PISTON (1.00) (OPTIONAL PART)	1		
7	13111-329-010	PIN, PISTON	1		
8	22821-329-000	RECEIVER, CLUTCH CABLE	1	1060830	
	22821-356-000	RECEIVER, CLUTCH CABLE	1	1060831	
9	90041-329-000	BOLT, SPECIAL, 6X32	5	1062704	
	95700-06032	BOLT, FLANGE, 6X32	3	2000001	
10	91302-329-010	O-RING, CYLINDER, 80X2	1		
11	94301-12200	PIN A, DOWEL, 12X20	3		
12	94601-19000	CLIP, PISTON PIN, 19PP	2		

E-6 Cam Chain · Tensioner



B329~6

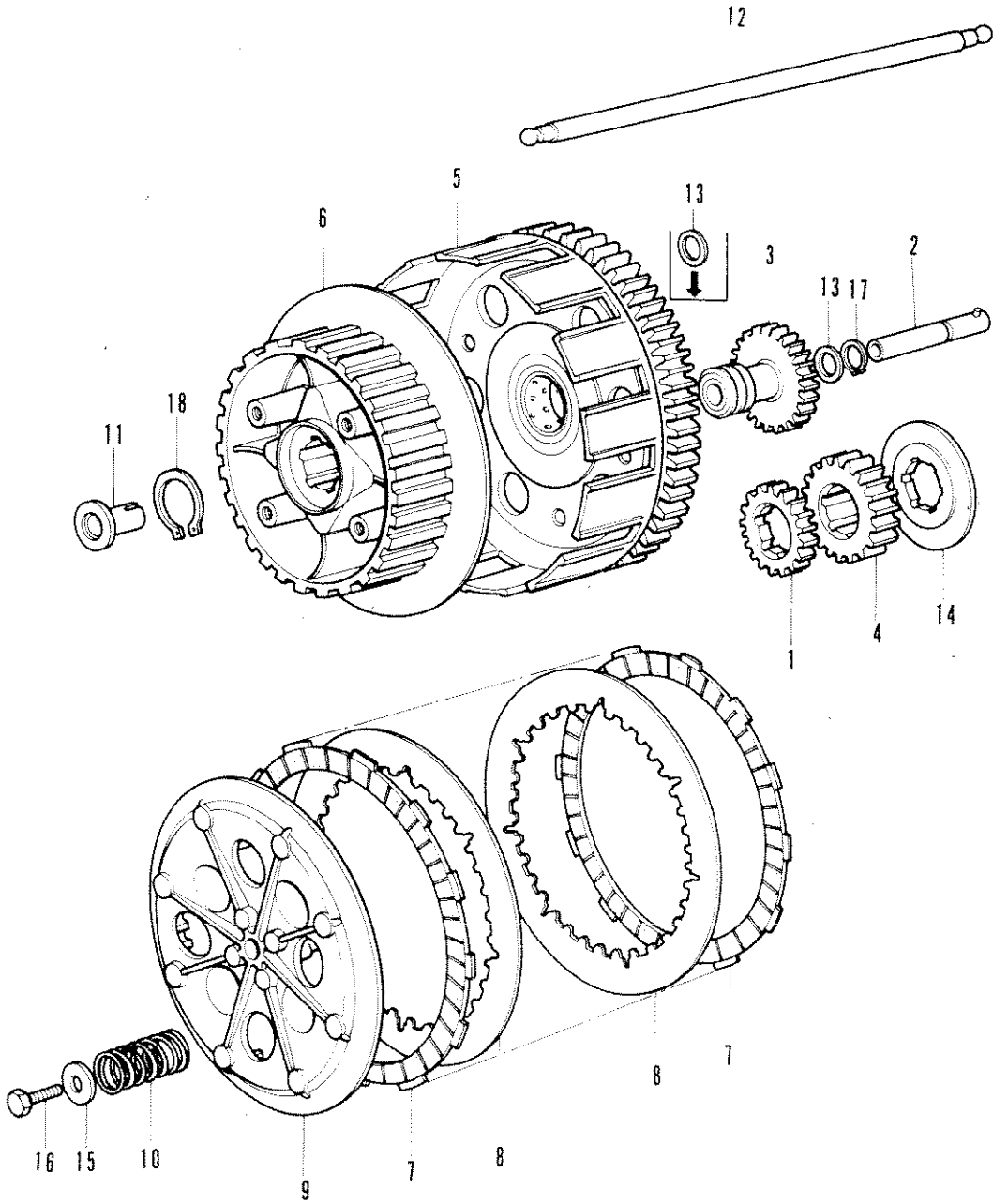
E-6 Cam Chain · Tensioner

Ref. No.	Part No.	Description	Reqd. No. XL250	Serial No.	Area Code
1	14321-329-000	SPROCKET, CAM	1		
2	14401-286-003	CHAIN, CAM (DK219T-94L) (ENDLESS DAIDO)	1		
3	14414-329-000	PLATE, CAM CHAIN SET	1		
4	14500-329-000	TENSIONER COMP., CAM CHAIN 14500-329-003	1		
	14500-329-003	TENSIONER COMP., CAM CHAIN	1		
5	14510-329-000	BAR COMP., CAM CHAIN TENSIONER SETTING	1		
6	14515-329-000	NUT, CAM CHAIN TENSIONER SETTING	1		
7	14541-329-000	SPRING, CAM CHAIN TENSIONER	1		
8	14561-329-000	CAP, CAM CHAIN TENSIONER SETTING BOLT	1		
9	14611-329-000	GUIDE, CAM CHAIN	1		
10	90018-329-000	BOLT, TENSIONER SETTING	1		
11	90019-329-000	BOLT, TENSIONER	1		
12	90081-246-000	BOLT, HEX., KNOCK, 7X12	2		
13	90107-538-010	BOLT, DRAIN	1		
14	91301-283-000	O-RING, 5X2.4	1		
15	91319-300-000	O-RING, 13X2.5	1		
16	92000-06012	BOLT, HEX., 6X12	1		
17	94101-06000	WASHER, PLAIN, 4MM	1		
18	94102-12000	WASHER, DRAIN PLUG, 12MM	1		

E-7 Right Crankcase Cover

Ref. No.	Part No.	Description	Reqd. No. XL250	Serial No.	Area Code
1	11330-329-000	COVER COMP., RIGHT CRANKCASE	1	1061858	
	11330-356-010	COVER COMP., RIGHT CRANKCASE	1	1061859	
2	11394-329-000	GASKET, RIGHT CRANKCASE COVER	1	1062704	
	11394-356-000	GASKET, RIGHT CRANKCASE COVER	1	2000001	
3	12361-107-000	CAP, TAPPET ADJUSTING HOLE	1		
4	12431-246-000	GEAR, TACHOMETER	1		
5	12435-329-000	COLLAR, TACHOMETER GEAR THRUST	1		
6	15421-329-000	SCREEN, OIL FILTER	1		
7	15426-107-000	SPRING, OIL FILTER SCREEN	1		
8	15650-329-000	GAUGE, OIL LEVEL	1	1060746	
	15650-356-000	GAUGE, OIL LEVEL	1	1060747	
9	44835-329-810	PLUG, SPEEDOMETER GEAR BOX 44835-365-670 (OPTIONAL PART)	1		
	44835-365-670	CAP, GEAR BOX HOLE	1		
10	90458-286-000	WASHER, TACHOMETER GEAR THRUST	1		
11	90539-011-000	WASHER, SPEEDOMETER PINION	1		
12	91204-286-003	OIL SEAL, 18X29X7	1		
	91204-286-005	OIL SEAL, 18X29X7	1		
13	91211-286-003	OIL SEAL, 4.8X11.5X4	1		
14	91303-107-000	O-RING, 35X3	1		
15	91354-702-000	O-RING, 23MM	1		
16	93500-06045	SCREW, PAN, 6X45	10		
17	93500-06055	SCREW, PAN, 6X55	2		
18	93700-06025-02	SCREW, OVAL, 6X45	1		

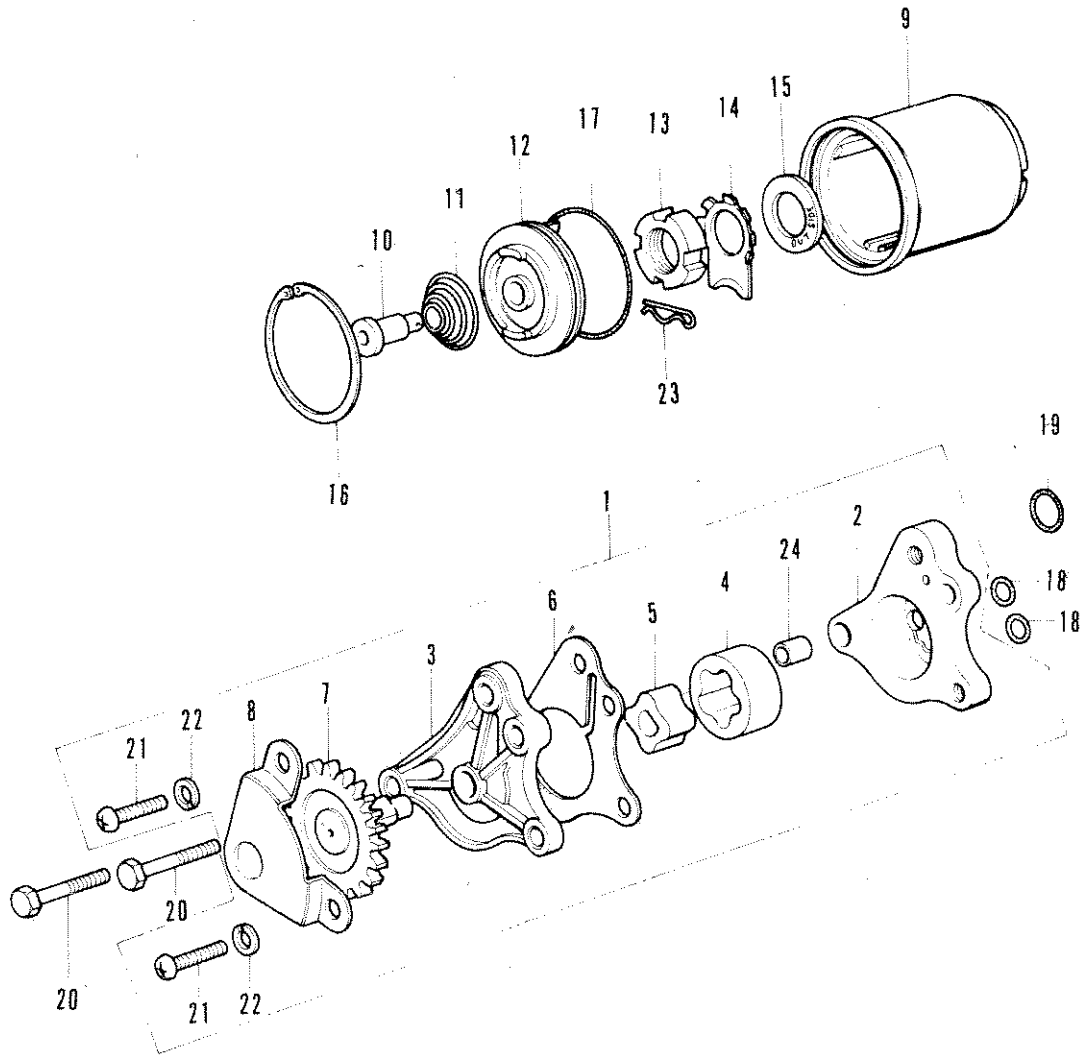
E-8 Clutch



E-8 Clutch

Ref. No.	Part No.	Description	Reqd. No. XL250	Serial No.	Area Code
1	12401-329-000	GEAR, TACHOMETER IDLER DRIVE	1	1062704	
	12401-356-010	GEAR, TACHOMETER IDLER DRIVE	1	2000001	
2	12410-329-000	SHAFT, TACHOMETER IDLER	1		
3	12420-329-000	PINION COMP., TACHOMETER	1		
4	13611-329-000	GEAR, PRIMARY DRIVE	1	1062704	
	13611-356-010	GEAR, PRIMARY DRIVE	1	2000001	
5	22100-329-010	OUTER COMP., CLUTCH	1	1062704	
	22100-356-000	OUTER COMP., CLUTCH	1	2000001	
6	22120-329-010	CENTER, CLUTCH	1		
7	22201-286-010	DISK, CLUTCH FRICTION	7		
8	22321-329-000	PLATE B, CLUTCH	6		
9	22350-329-000	PLATE, CLUTCH PRESSURE	1		
10	22401-268-000	SPRING, CLUTCH	4		
11	22838-329-000	PIECE, CLUTCH LIFTER JOINT	1		
12	22850-329-000	ROD, CLUTCH LIFTER	1	1062704	
	22850-329-770	ROD, CLUTCH LIFTER	1	2000001	
13	90412-329-000	WASHER, COUNTER SHAFT TOP GEAR / 1061858 (1)	2	1061859	
14	90456-329-000	WASHER A, THRUST, 25MM	1	1062704	
	90456-329-770	WASHER A, THRUST, 25MM	1	2000001	
15	90481-259-000	WASHER, 6X19	4		
16	92020-06020	BOLT, HEX., 6X20	4		
17	94510-10000	CIR CLIP, EXTERNAL, 10MM	1		
18	94510-25000	CIR CLIP, EXTERNAL, 25MM	1		

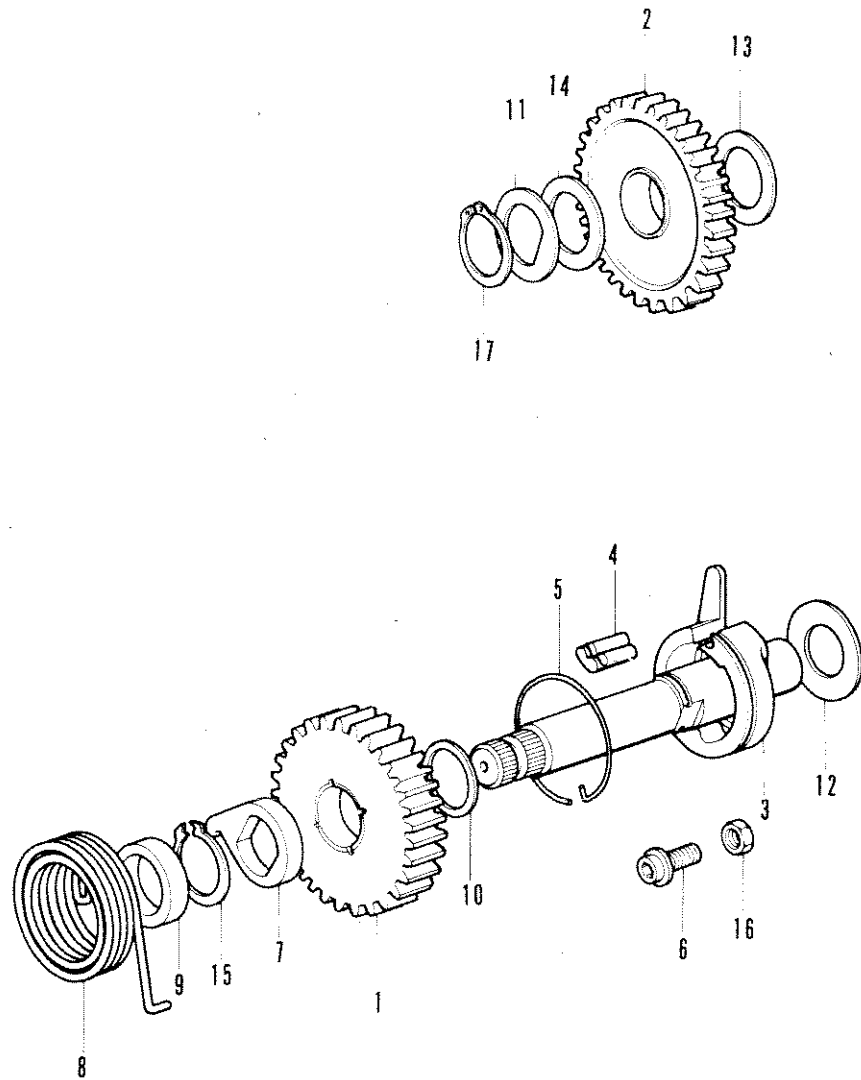
E-9 Oil Pump · Oil Filter Rotor



E-9 Oil Pump · Oil Filter Rotor

Ref. No.	Part No.	Description	Reqd. No. XL250	Serial No.	Area Code
1	15100-329-010	PUMP ASSY., OIL	1	1062704	
	15100-356-000	PUMP ASSY., OIL	1	2000001	
2	15111-329-010	BODY, OIL PUMP	1		
3	15121-329-010	COVER, OIL PUMP SIDE	1	1062704	
	15121-356-000	COVER, OIL PUMP SIDE	1	2000001	
4	15122-329-010	ROTOR, OIL PUMP OUTER	1		
5	15123-329-010	ROTOR, OIL PUMP INNER	1		
6	15129-329-010	GASKET, OIL PUMP COVER	1		
7	15131-329-000	GEAR, OIL PUMP DRIVE	1	1062704	
	15131-356-000	GEAR, OIL PUMP DRIVE	1	2000001	
8	15197-329-000	PLATE, OIL PUMP SETTING	1		
9	15441-329-000	ROTOR, OIL FILTER	1	1062704	
	15441-362-000	ROTOR, OIL FILTER	1	2000001	
10	15445-329-000	THROUGH, OIL	1	1060746	
	15445-356-000	THROUGH, OIL	1	1060747	
11	15446-107-000	SPRING, OIL THROUGH	1	1060746	
	15446-356-000	SPRING, OIL THROUGH	1	1060747	
12	15450-329-000	CAP, OIL FILTER	1		
13	90231-200-010	NUT, LOCK, 16MM	1		
14	90431-292-000	WASHER, LOCK, 16MM	1		
15	90481-292-000	WASHER, OIL FILTER ROTOR LOCK	1		
16	90604-292-000	CIR. CLIP, INTERNAL, 45MM	1		
17	91310-329-000	O-RING, 39X1.8	1		
18	91312-107-000	O-RING, 7X1.7	2		
19	91319-300-000	O-RING, 13X2.5	1		
20	92000-06028	BOLT, HEX., 6X28	2		
21	93500-06018	SCREW, PAN, 6X18	2		
22	94111-06000	WASHER, SPRING, 6MM	2		
23	94251-06000	PIN, LOCK, 8MM	1		
24	94301-08100	PIN A, DOWEL, 8X10	1		

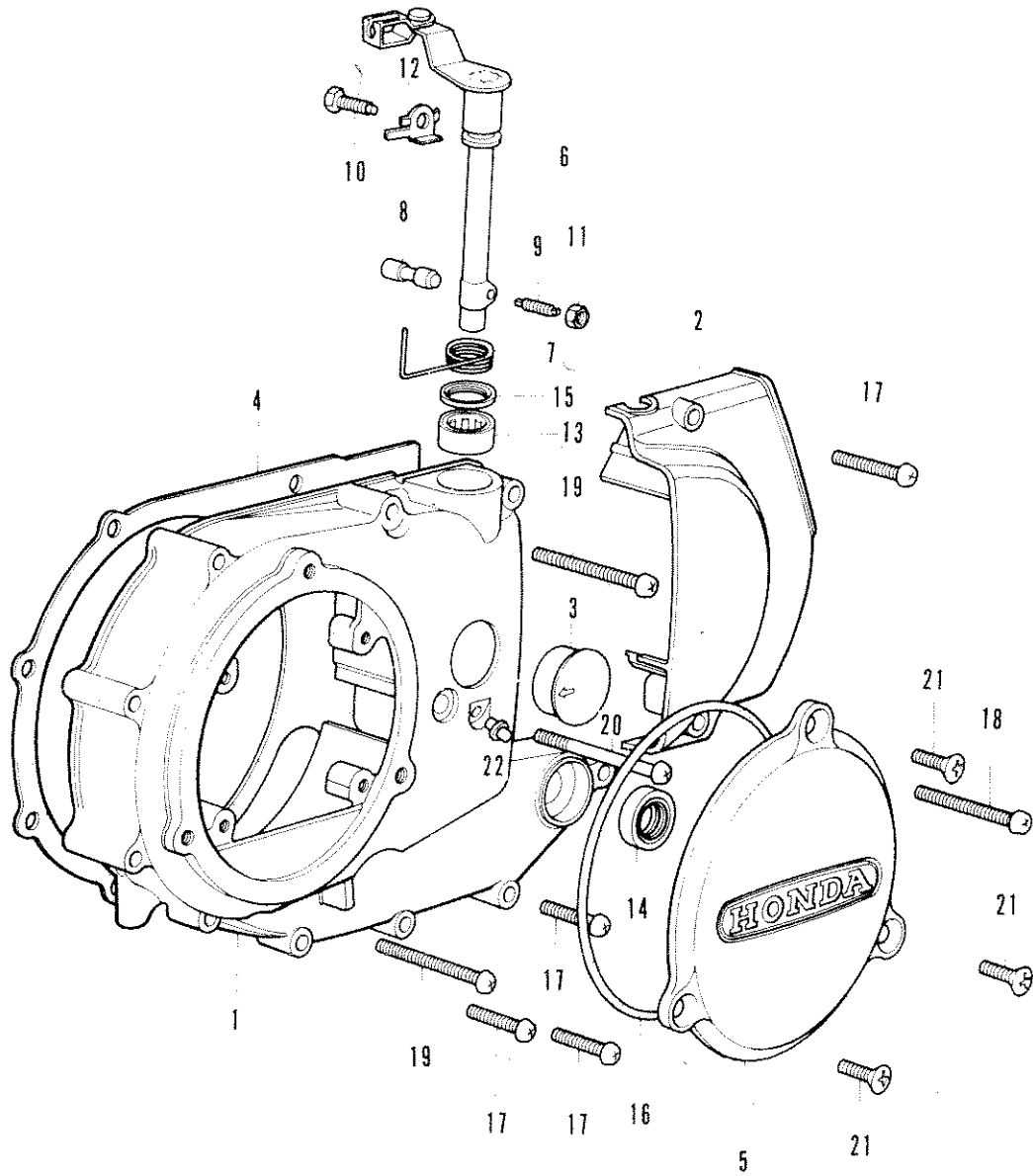
E-10 Primary Kick Starter



E-10 Primary Kick Starter

Ref. No.	Part No.	Description	Reqd. No. XL250	Serial No.	Area Code
1	28210-329-000	PINION COMP., KICK STARTER	1	1062704	
	28210-356-010	PINION COMP., KICK STARTER 28210-356-020	1	2000001	2013887
	28210-356-020	PINION COMP., KICK STARTER	1	2013888	
2	28221-329-000	GEAR, KICK STARTER IDLE	1	1062704	
	28221-356-010	GEAR, KICK STARTER IDLE	1	2000001	
3	28250-329-010	SPINDLE COMP., KICK STARTER	1	1062704	
	28250-356-000	SPINDLE COMP., KICK STARTER	1	2000001	
4	28252-329-010	PAWL, KICK STARTER	1	1062704	
	28252-356-000	PAWL, KICK STARTER	1	2000001	
5	28253-300-000	SPRING, KICK STARTER RACHET	1		
6	28254-329-300	PIN, KICK STOPPER	1	1062704	
	28254-356-000	PIN, KICK STOPPER	1	2000001	
7	28258-329-000	RETAINER, KICK STARTER SPRING	1		
8	28261-329-000	SPRING, KICK STARTER	1		
9	28262-329-000	COLLAR, KICK STARTER SPRING	1		
10	90452-504-010	WASHER A, THRUST, 22MM	1		
11	90453-329-000	WASHER, THRUST, 20MM	1		
12	90454-329-000	WASHER, 16MM	1		
13	90458-292-000	WASHER, THRUST, 20MM	1		
14	90458-329-010	WASHER, THRUST, 20MM	1		
15	90601-329-000	CIR CLIP, 22MM	1		
16	94002-10000-05	NUT, HEX., 10MM	1		
17	94510-20000	CIR CLIP, EXTERNAL, 20MM	1		

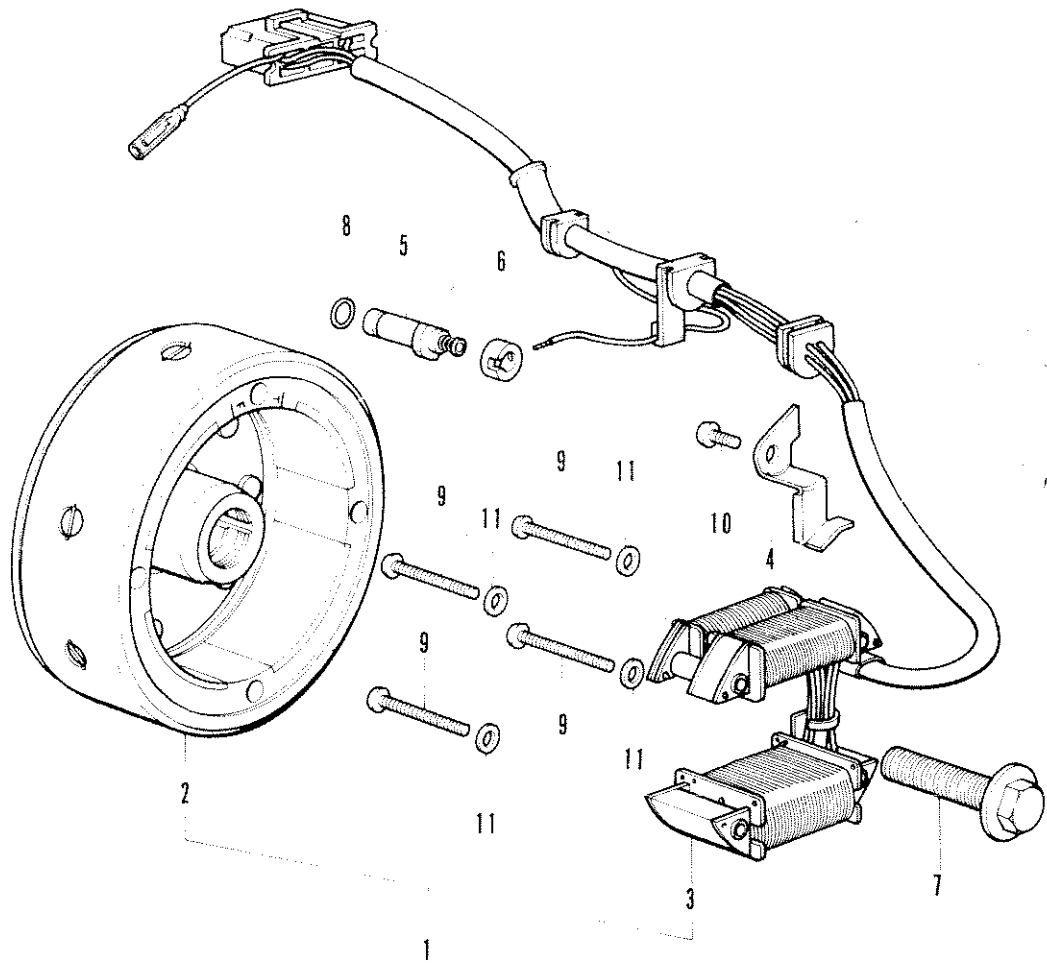
E-11 Left Crankcase Cover · Clutch Lever



E-11 Left Crankcase Cover · Clutch Lever

Ref. No.	Part No.	Description	Reqd. No. XL250	Serial No.	Area Code
1	11341-329-000	COVER COMP., LEFT CRANKCASE 11341-329-010	1	2005240	
	11341-329-010		1	2005241	
2	11351-329-000	COVER, LEFT CRANKCASE REAR	1		
3	11391-329-000	CAP, CLUTCH ADJUSTING HOLE	1		
4	11395-329-000	GASKET, LEFT CRANKCASE COVER	1		
5	11431-329-000	COVER, DYNAMO	1		
6	22810-329-000	LEVER COMP., CLUTCH 22810-356-000	1	1060784	
	22810-356-000	LEVER COMP., CLUTCH	1	1060785	
7	22815-329-000	SPRING, CLUTCH LEVER	1		
8	22841-329-000	PIECE, LIFTER ROD END	1		
9	90012-200-000	SCREW, TAPPET ADJUSTING 90012-333-000	1	1047381	
	90012-333-000	SCREW, TAPPET ADJUSTING	1	1047382	
10	90017-329-000	BOLT, KNOCK, 6MM	1		
11	90206-246-000	NUT, TAPPET ADJUSTING	1		
12	90434-329-000	WASHER, LOCK, 6MM	1		
13	91031-329-000	BEARING, NEEDLE, 16MM	1		
14	91206-286-005	OIL SEAL, 14X28X7	1		
15	91206-329-000	OIL SEAL, 16X22X3.5	1	1058615	
	91206-329-005	OIL SEAL, 16X22X3.5	1		
	91206-329-154	OIL SEAL, 16X22X3.5	1	1058616	
16	91301-329-000	O-RING, 109X3	1		
17	93500-06032	SCREW, PAN, 6X3	6		
18	93500-06050	SCREW, PAN, 6X5	1		
19	93500-06055	SCREW, PAN, 6X5	5		
20	93500-06060	SCREW, PAN, 6X6	1		
21	93700-06016-02	SCREW, OVAL, 6X16	3		
22	96201-30001	NIPPLE, GREASE, A.45	1		

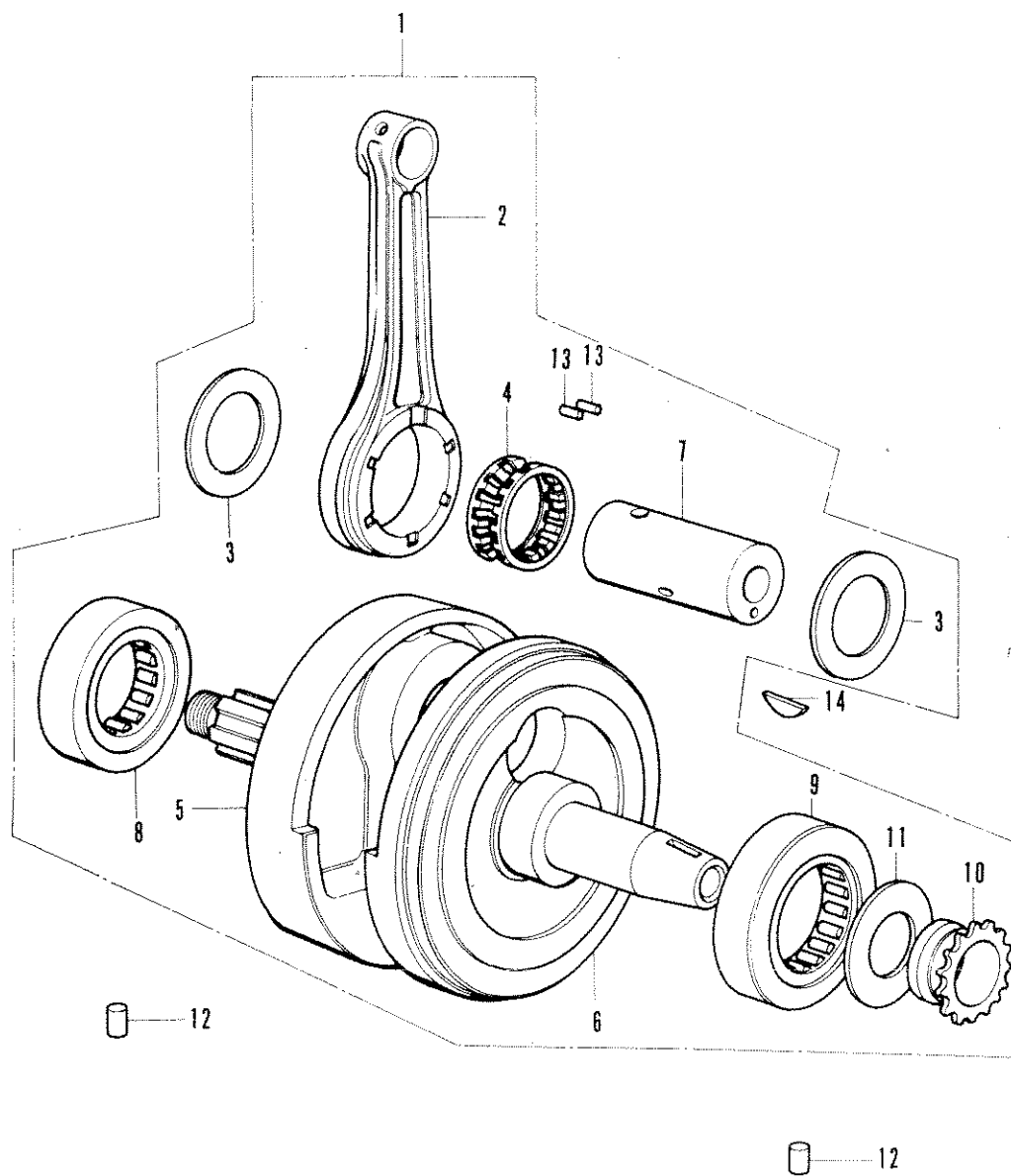
E-12 A. C. Generator



E-12 A. C. Generator

Ref. No.	Part No.	Description	Reqd. No. XL250	Serial No.	Area Code
1	31100-329-014	ALTERNATOR ASSY	1	1062704	
	31100-329-774	GENERATOR ASSY., FLY WHEEL A.C. (ND)	1	2000001	
2	31121-329-014	FLYWHEEL COMP. (ND)	1	1062704	
	31121-329-774	WHEEL ASSY., A.C GENERATOR FLY	1	2000001	
3	31141-329-004	STATOR ASSY. (ND)	1		
4	32111-329-000	CLAMPER, CORD	1		
5	35750-028-000	CONTACT ASSY., NEUTRAL SWITCH	1		
6	35752-329-300	SPACER, NEUTRAL SWITCH	1		
7	90023-329-000	BOLT, FLANGE, 12X40	1		
8	91312-107-000	O-RING, 7X1.7	1		
9	93500-05045-0A	SCREW, PAN, 5X45	4		
10	93500-06012	SCREW, PAN, 6X12	1		
11	94101-05000	WASHER, PLAIN, 5MM	4		

E-13 Crankshaft

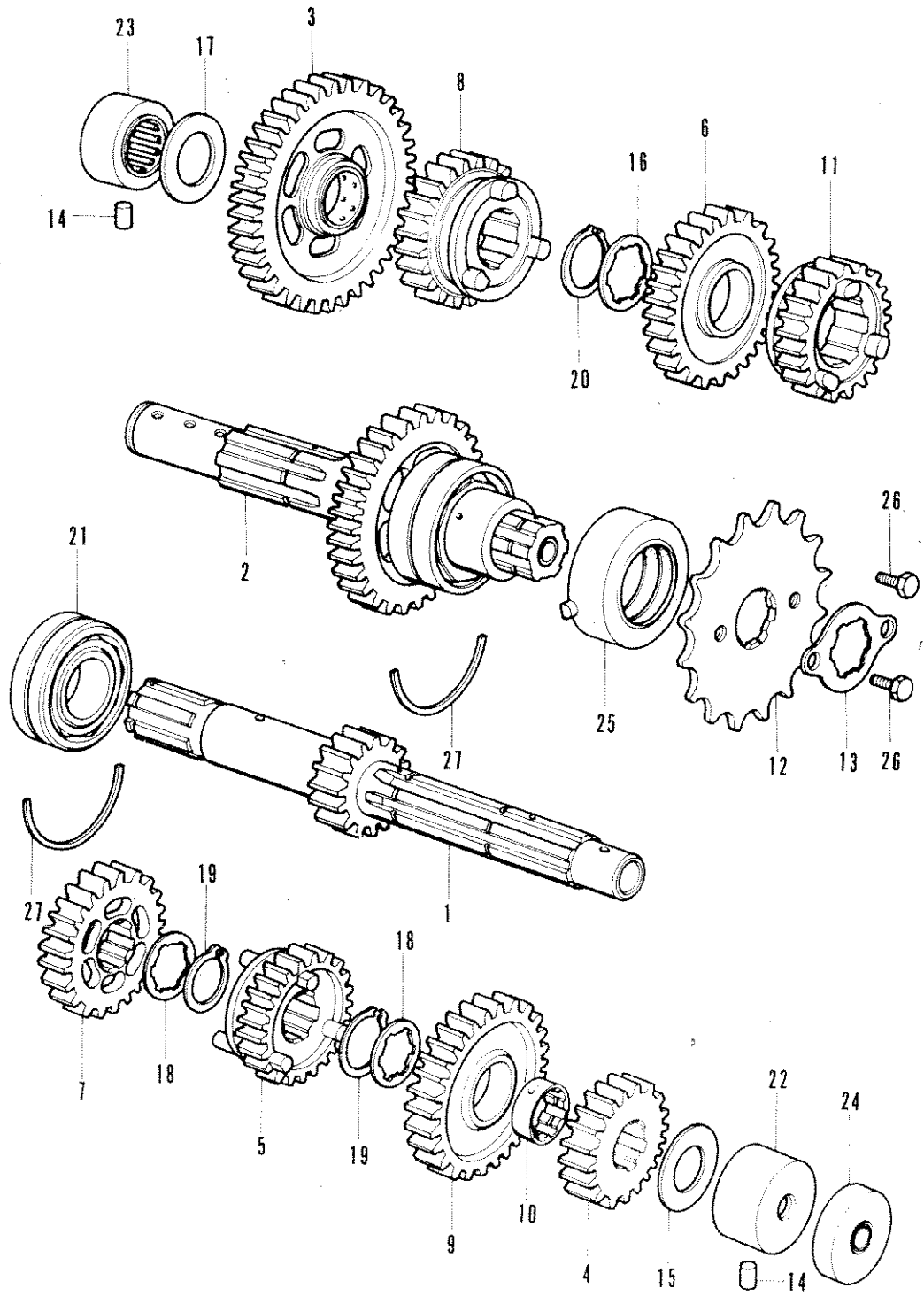


B 329-13A

E-13 Crankshaft

Ref. No.	Part No.	Description	Reqd. No. XL250	Serial No.	Area Code
1	13000-329-010	CRANKSHAFT ASSY.	1	1062704	
	13000-329-770	CRANKSHAFT COMP.	1	2000001	
2	13201-329-300	ROD, CONNECTING	1		
3	13202-329-770	PLATE, CONNECTING ROD SIDE	2	2000001	
4	13211-329-003	RETAINER, CONNECTING ROD ROLLER	1		
5	13310-329-300	CRANKSHAFT COMP., RIGHT	1	1062704	
	13310-329-770	CRANKSHAFT COMP., RIGHT	1	2000001	
6	13320-329-300	CRANKSHAFT COMP., LEFT	1	1062704	
	13320-329-770	CRANKSHAFT COMP., LEFT	1	2000001	
7	13351-329-300	PIN, CRANK	1		
8	13410-329-310	BEARING ASSY., RIGHT CRANK	1		
9	13420-329-310	BEARING ASSY., LEFT CRANK	1	1058615	
	13420-329-008	BEARING ASSY., LEFT CRANK	1	1058615	
10	14312-329-300	SPROCKET, TIMING	1		
11	90452-329-000	WASHER, 26MM	1		
12	90708-286-000	PIN, DOWEL, 7X12	2		
13	91105-329-300	POLLER, 3.5X13.0	24		
14	94401-25180	KEY, WOODRUFF, 45X18	1		

E-14 Transmission

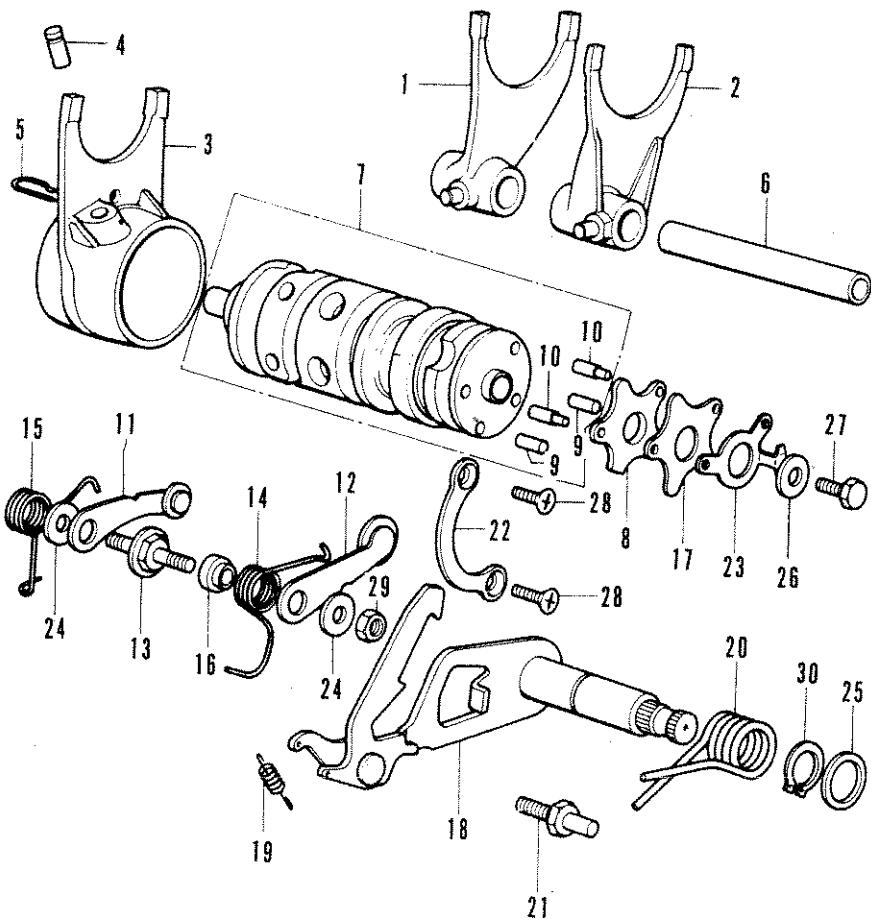


B329-14

E-14 Transmission

Ref. No.	Part No.	Description	Reqd. No. XL250	Serial No.	Area Code
1	23211-329-010	SHAFT, TRANSMISSION MAIN (17T)	1	1062704	
	23211-329-770	MAINSHAFT, TRANSMISSION (17T)	1	2000001	
2	23220-329-020	SHAFT, TRANSMISSION COUNTER (35T)	1	1062704	
	23220-329-770	COUNTERSHAFT, TRANSMISSION (35T)	1	2000001	
3	23410-329-000	GEAR, COUNTER SHAFT LOW (40T)	1		
4	23421-329-000	GEAR, MAINSHAFT SECOND (21T)	1		
5	23441-329-000	GEAR, MAIN SHAFT THIRD (25T)	1		
6	23451-329-000	GEAR, COUNTER SHAFT THIRD (32T)	1		
7	23461-329-010	GEAR, MAIN SHAFT FOURTH (28T)	1		
8	23471-329-010	GEAR, COUNTER SHAFT FOURTH (28T)	1		
9	23481-329-010	GEAR, MAIN SHAFT 10 th (31T)	1		
10	23485-329-000	PUSH, SPLINE, 27MM	1		
11	23491-329-020	GEAR, COUNTER SHAFT TOP (25T)	1		
12	23801-329-000	SPROCKET, DRIVE (15T)	1		
	23801-329-810	SPROCKET, DRIVE (14T) (OPTIONAL PART)	1		
13	23811-292-000	PLATE, DRIVE SPROCKET FIXING	1		
14	24261-283-000	PIN, GEAR SHIFT FORK GUIDE	2		
15	90411-329-000	WASHER, THRUST, 17X32	1	1062704	
	90411-356-000	WASHER, THRUST, 17X32	1	2000001	
16	90451-300-000	WASHER, THRUST, 25MM	1		
17	90458-292-000	WASHER, THRUST, 20MM	1		
18	90463-329-000	WASHER, SPLINE, 22MM	2		
19	90601-329-000	CIR CLIP, 22MM	2		
20	90602-259-010	CIR CLIP, 25MM	1		
21	91002-286-008	BEARING, BALL, 205 ¹⁵ S (TOYO)	1		
22	91021-329-003	BEARING, NEEDLE, 17MM (TOYO)	1	1062704	
	91021-356-018	BEARING, NEEDLE, 17MM (TOYO)	1	2000001	
23	91022-312-004	BEARING B, NEEDLE, 20MM (KOYO)	1		
24	91203-292-005	OIL SEAL, 8X34X	1		
25	91205-312-013	OIL SEAL, 34X52X13.5X15.5 91205-333-005	4	1040759	
	91205-333-005	OIL SEAL, 34X52X13.5X15.5	1	1040760	
26	92000-06008	BOLT, HEX., 6X8	2		
27	95015-25200	SET RING, 520	2		

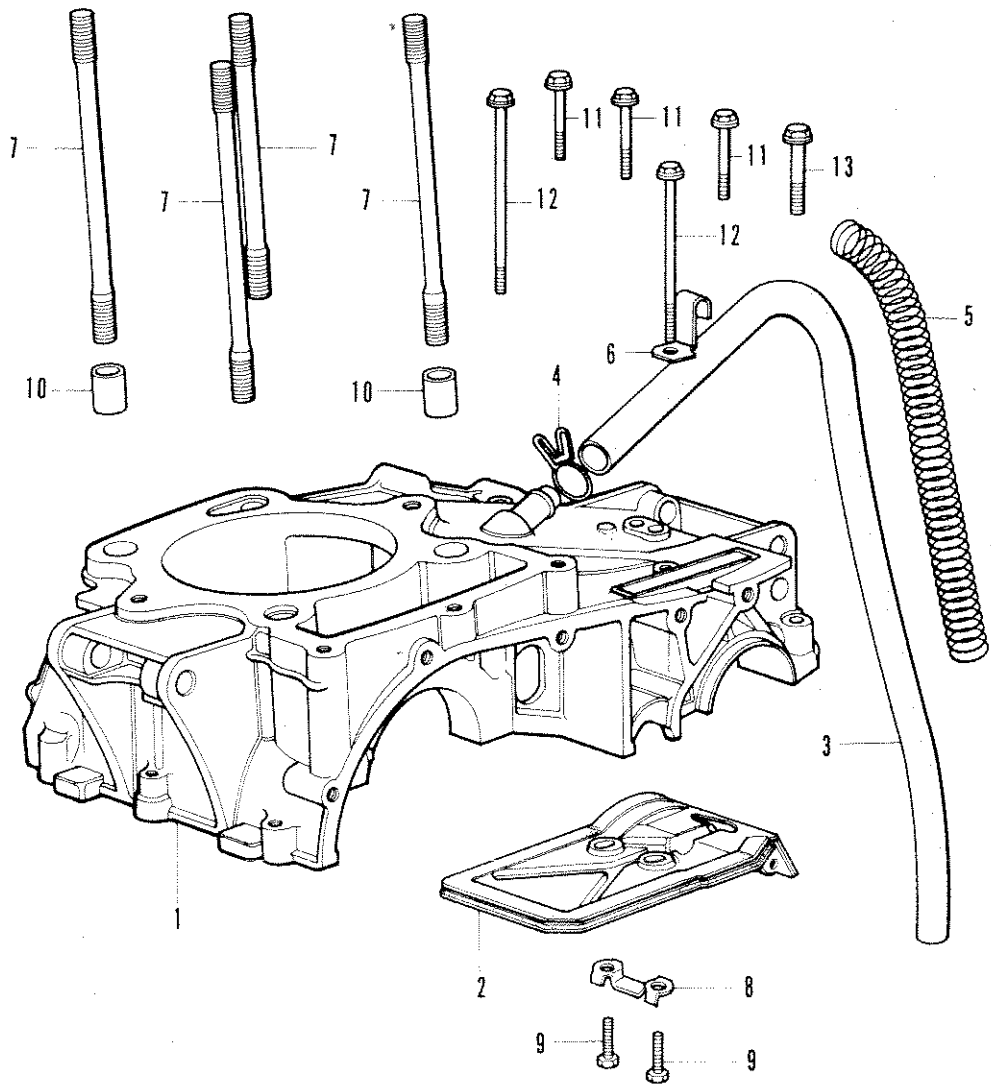
E-15 Shift Fork



E-15 Shift Fork

Ref. No.	Part No.	Description	Reqd. No. XL250	Serial No.	Area Code
1	24211-329-000	FORK, RIGHT GEAR SHIFT	1		
2	24212-329-000	FORK, LEFT GEAR SHIFT	1	1060286	
	24212-356-000	FORK, LEFT GEAR SHIFT	1	1060287	
3	24213-329-000	FORK, CENTER GEAR SHIFT	1		
4	24261-292-000	PIN, GEAR SHIFT FORK GUIDE	1	1060964	
	24261-356-000	PIN, GEAR SHIFT FORK GUIDE	1	1060965	
5	24263-028-000	CLIP, GEAR SHIFT FORK GUIDE PIN	1		
6	24265-329-000	SHAFT, GEAR SHIFT FORK GUIDE	1	1060286	
	24265-356-000	SHAFT, GEAR SHIFT FORK GUIDE	1	1060287	
7	24301-329-010	DRUM COMP., GEAR SHIFT	1		
8	24305-329-300	PLATE, DRUM STOPPER CAM	1		
9	24306-235-300	PIN, GEAR SHIFT DRUM	2		
10	24308-329-310	PIN, GEAR SHIFT DRUM, 4MM	2		
11	24420-329-000	ARM COMP., NEUTRAL STOPPER	1		
12	24430-329-030	STOPPER, SHIFT DRUM	1		
13	24434-329-010	SHAFT, SHIFT DRUM STOPPER	1		
14	24435-329-010	SPRING, SHIFT DRUM STOPPER	1		
15	24436-329-010	SPRING, NEUTRAL STOPPER	1		
16	24437-329-010	COLLAR, SHIFT DRUM STOPPER	1		
17	24439-329-010	PLATE, ROLLER STOPPER	1		
18	24610-329-000	SPINDLE COMP., GEAR SHIFT	1		
19	24641-329-010	SPRING, GEAR SHIFT ARM	1		
20	24651-329-000	SPRING, GEAR SHIFT RETURN	1		
21	24652-300-000	PIN, SHIFT RETURN SPRING	1		
22	24710-329-000	PLATE, BEARING SET	1		
23	35753-329-010	ROTOR, NEUTRAL SWITCH	1		
24	90453-292-010	WASHER, SHIFT DRUM STOPPER	2		
25	90454-500-000	WASHER, THRUST, 14MM	1		
26	90481-259-000	WASHER, 6X19	1		
27	92000-06012	BOLT, HEX., 6X12	1		
28	93600-06014	SCREW, FLAT, 6X14	2		
29	94001-06000	NUT, HEX., 6MM	1		
30	94510-14000	CIR CLIP, EXTERNAL, 14MM	1		

E-16 Upper Crankcase

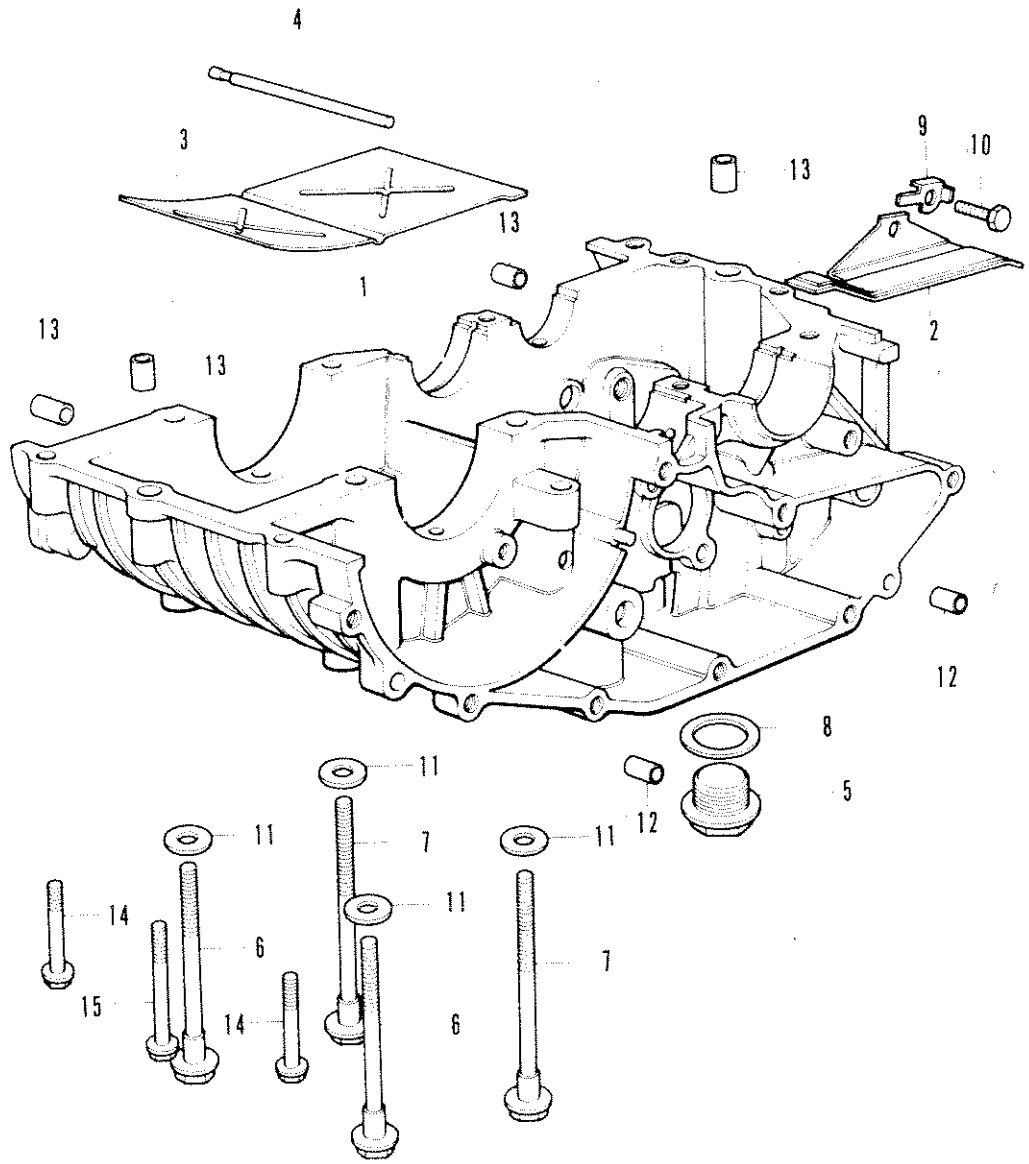


B329-16A

E-16 Upper Crankcase

Ref. No.	Part No.	Description	Reqd. No. XL250	Serial No.	Area Code
1	11100-329-020	CRANKCASE COMP., UPPER	1	1062704	
	11100-329-770	CASE COMP., UPPER CRANK	1	2000001	
2	11110-329-000	PLATE COMP., BREATHER	1	1062704	
	11110-329-770	PLATE COMP., BREATHER	1	2000001	
3	15771-329-000	TUBE, BREATHER	1	1062704	
	15771-356-000	TUBE, BREATHER	1	2000001	
4	15772-551-000	CLIP, BREATHER TUBE	1	1062704	
5	15773-356-000	PROTECTOR, BREATHER TUBE	1	2000001	
6	32112-329-000	CLAMPER, A.C. GENERATOR CORD	1		
7	90031-329-000	BOLT, CYLINDER STUD, 10 MM	4		
8	90484-329-000	WASHER, TWIN TONGUED, 6MM	1		
9	92000-06016	BOLT, HEX., 6X16	2		
10	94301-12160	PIN A, DOWEL, 12X16	2		
11	95700-06035	BOLT, FLANGE, 6X35	3		
12	95700-06090	BOLT, FLANGE, 6X90	2		
13	95700-08040	BOLT, FLANGE, 8X40	1		

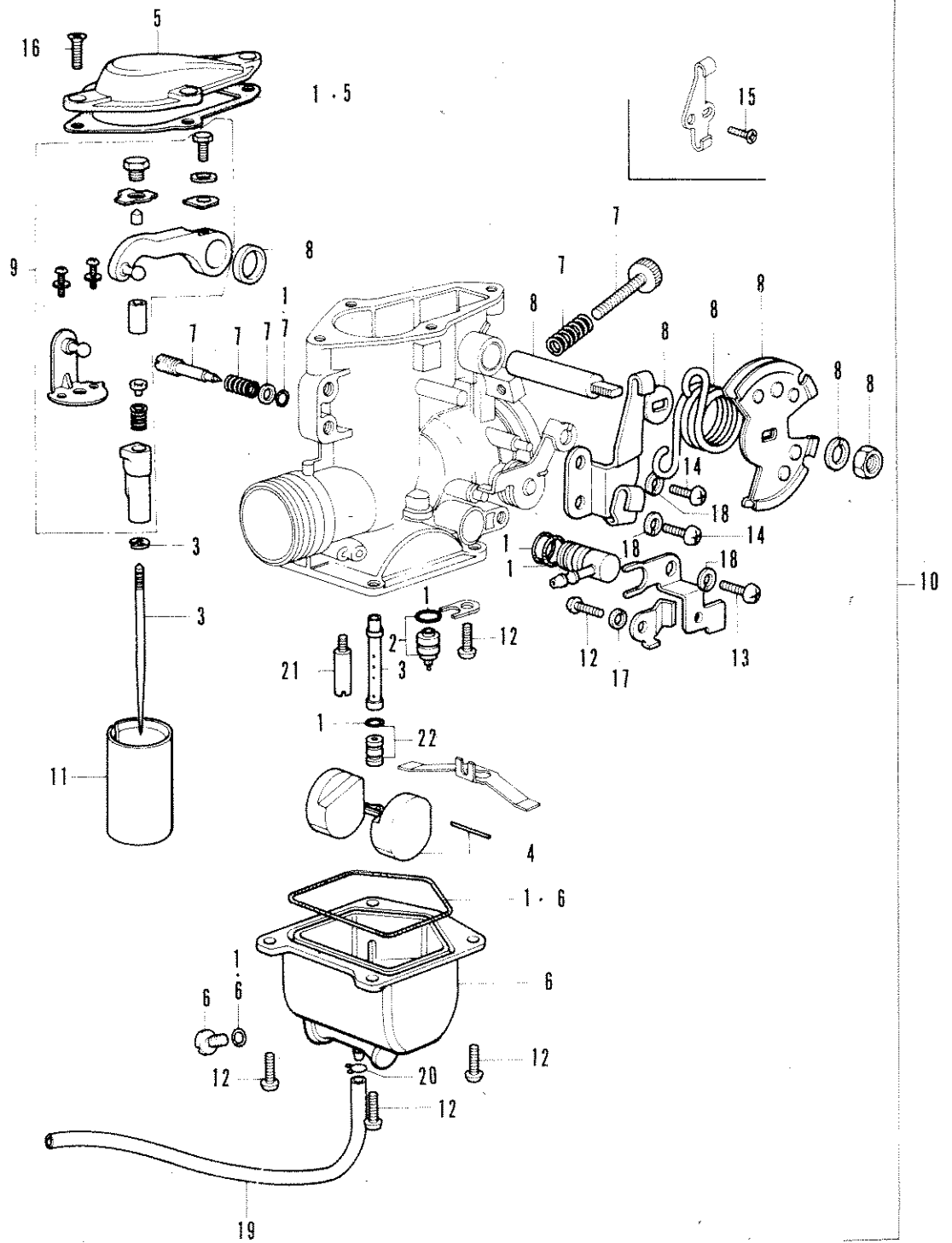
E-17 Lower Crankcase



E-17 Lower Crankcase

Ref. No.	Part No.	Description	Reqd. No. XL250	Serial No.	Area Code
1	11200-329-010	CRANKCASE COMP., LOWER	1	1062704	
	11200-329-770	CRANKCASE COMP., LOWER	1	2000001	
2	11353-329-000	PROTECTOR, CASE	1		
3	11761-329-000	SEPARATOR, OIL	1		
4	11762-329-000	HAR, OIL SEPARATOR NETTING	1		
5	90013-230-000	BOLT, DRAIN COCK	1		
6	90044-329-000	BOLT, U.B.S., 8x92	2	1062704	
	90086-333-000	BOLT, U.B.S., 8x97	2	2000001	
7	90045-329-000	BOLT, U.B.S., 8x114	2		
8	90407-205-000	PACKING, DRAIN COCK	1		
9	90434-329-000	WASHER, LOCK, 6 M	1		
10	92000-06016	BOLT, HEX., 6x17	1		
11	94101-08000	WASHER, PLAIN, MR	4	1062704	
12	94301-08140	PIN A, DOWEL, 8x14	2		
13	94301-10140	PIN A, DOWEL, 10x14	4		
14	95700-06035	BOLT, FLANGE, 6x35	2		
15	95700-06055	BOLT, FLANGE, 6x55	1		

E-18 Carburetor (KEIHIN)

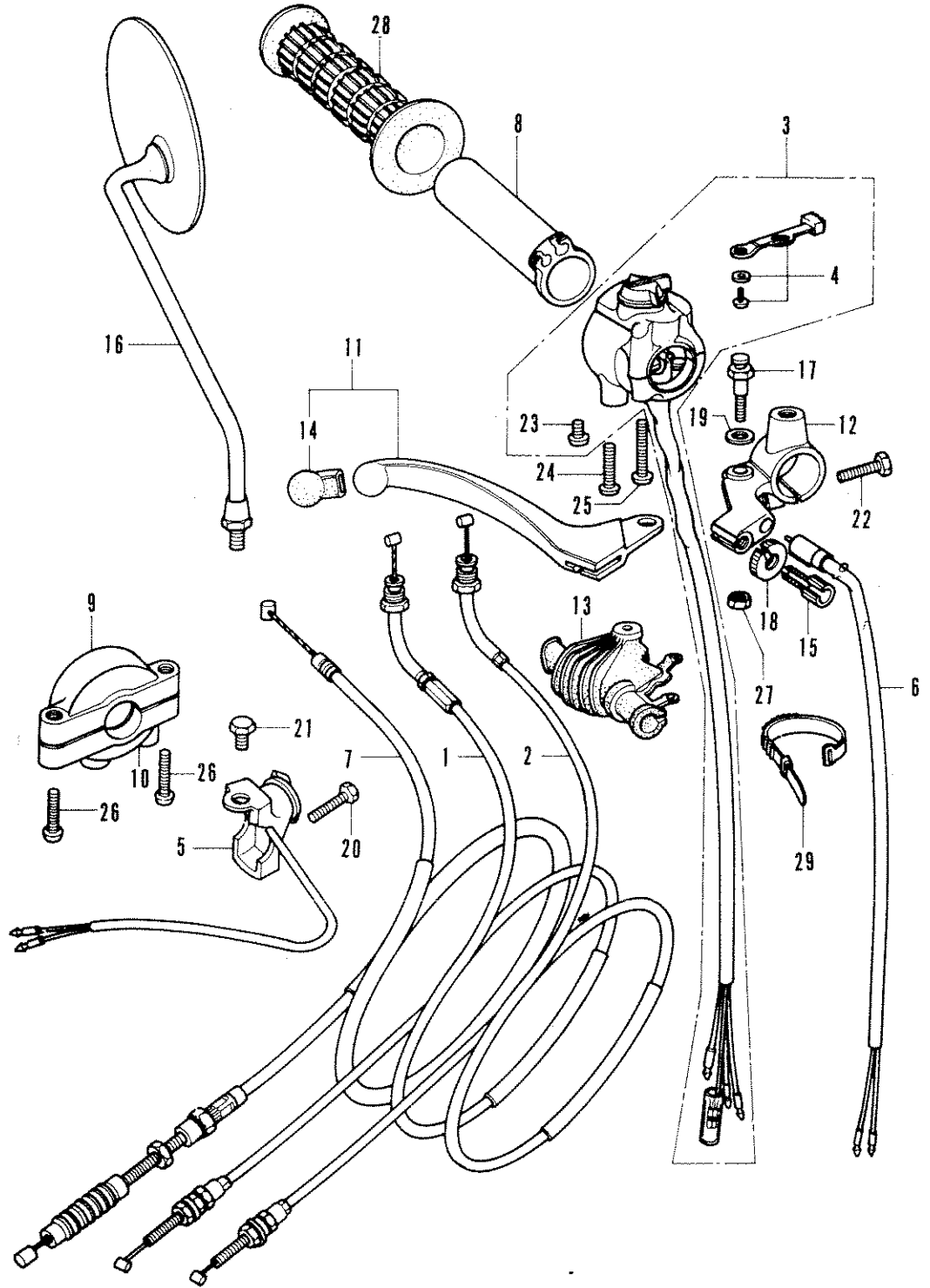


B 329-18A

E-18 Carburetor (KEIHIN)

Ref. No.	Part No.	Description	Reqd. No. XL250	Serial No.	Area Code
1	16010-329-004	GASKET SET	1		
2	16011-329-004	VALVE SET, FLOAT	1		
3	16012-329-004	NEEDLE SET, JET	1		
4	16013-329-004	FLOAT SET	1		
5	16014-329-004	TOP SET	1		
6	16015-329-004	CHAMBER SET, FLOAT	1		
7	16016-329-004	SCREW SET	1		
8	16017-329-004	LINK SET	1		
9	16018-329-004	ARM SET, LINK	1		
10	16100-329-004	CARBURETOR ASSY. (KEIHIN)	1	1062704	
	16100-329-774	CARBURETOR ASSY.	1	2000001	
11	16111-329-004	VALVE, THROTTLE	1		
12	93500-04010-0A	SCREW, PAN, 4X10	6	1062704	
	93500-04010-0H	SCREW, PAN, 4X10	6	2000001	
13	93500-05012-0A	SCREW, PAN, 5X12	1	1062704	
	93500-05012-0H	SCREW, PAN, 5X12	1	2000001	
14	93500-05016-0A	SCREW, PAN, 5X16	2	1062704	
15	93600-05012-0A	SCREW, FLAT, 5X12	1	2000001	
16	93700-04016-0A	SCREW, OVAL, 4X16	4	1062704	
	93700-04018-0H	SCREW, OVAL, 4X18	4	2000001	
17	94111-04000	WASHER, SPRING, 4MM	1		
18	94111-05000	WASHER, SPRING, 5MM	3		
19	95001-35360-40	TUBE, FUEL, 3.5x360	1		
20	95002-02070	CLIP, TURE, B7	1		
21	99103-329-0380	JET, SLOW (#38) (OPTIONAL PART)	1		
	99103-329-0400	JET, SLOW (#40) (OPTIONAL PART)	1		
	99103-329-0420	JET, SLOW (#42) (OPTIONAL PART)	1		
	99103-329-0450	JET, SLOW (#45) (STD.)	1		
	99103-329-0480	JET, SLOW (#48) (OPTIONAL PART)	1		
	99103-329-0500	JET, SLOW (#50) (OPTIONAL PART)	1		
22	99201-329-1050	JET, MAIN (#105) (OPTIONAL PART)	1		
	99201-329-1100	JET, MAIN (#110) (OPTIONAL PART)	1		
	99201-329-1150	JET, MAIN (#115) (OPTIONAL PART)	1		
	99201-329-1200	JET, MAIN (#120) (STD.)	1		
	99201-329-1250	JET, MAIN (#125) (OPTIONAL PART)	1		
	99201-329-1300	JET, MAIN (#130) (OPTIONAL PART)	1		

F-1 R/H Handle Switch · Cable



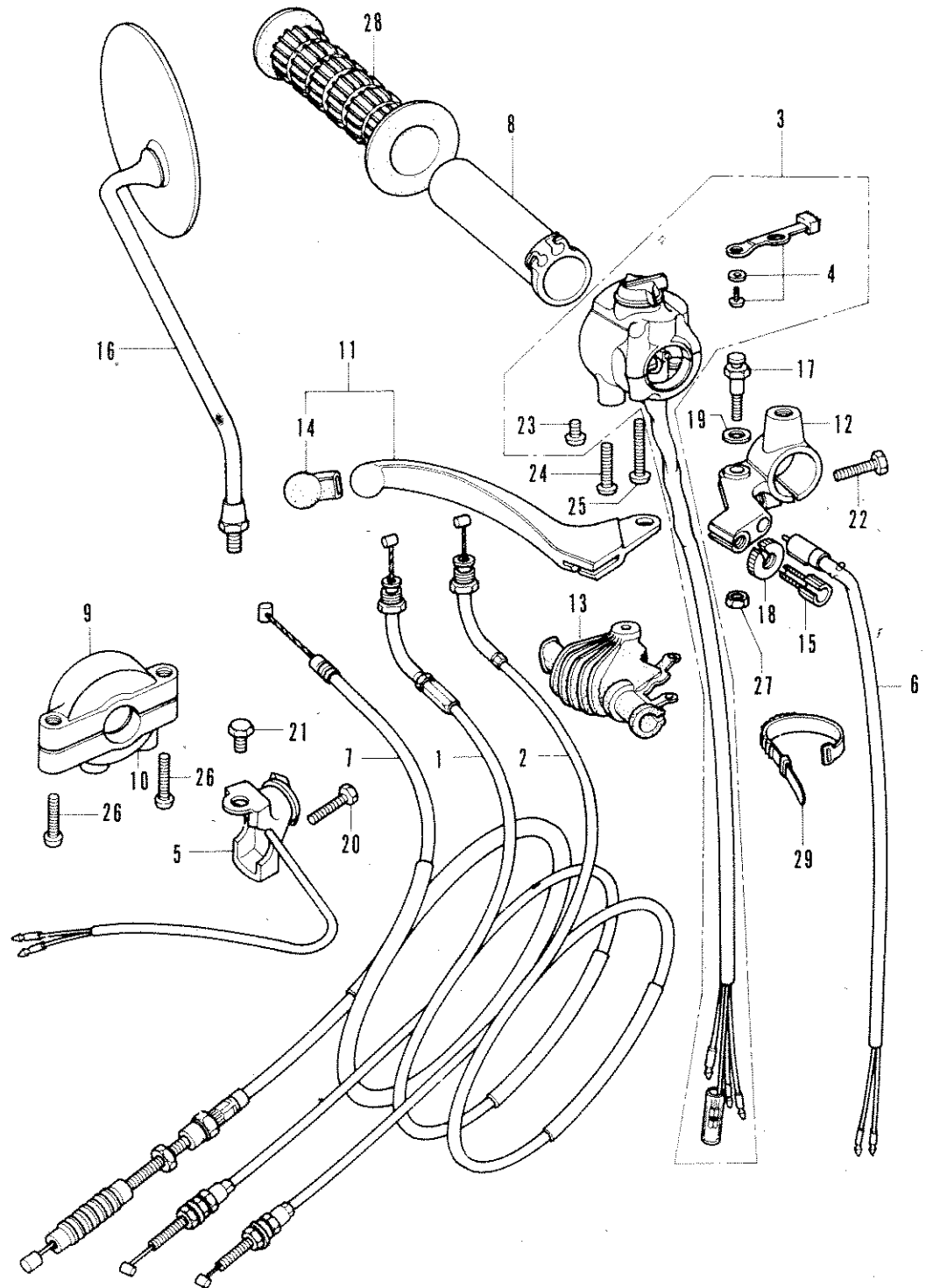
B329-19

F-1 R/H Handle Switch · Cable

Ref. No.	Part No.	Description	Reqd. No. XL250	Serial No.	Area Code
1	17910-329-000	CABLE COMP. A, THROTTLE	1	1062461	D,E,ED,F,G
	17910-356-000	CABLE COMP. A, THROTTLE	1		A
2	17920-329-000	CABLE COMP. B, THROTTLE	1	1062462	D,E,ED,F,G
	17920-356-000	CABLE COMP. B, THROTTLE	1		A
3	35300-329-620	SWITCH ASSY., DIMMER KILL	1	1062462	D,E,ED,F,G
	35300-329-672	SWITCH ASSY., LIGHTING DIMMER KILL	1		E,ED,F,G
4	35315-235-000	KNOB, LIGHTING SWITCH	1		A,D
5	35320-329-811	SWITCH ASSY., KILL (OPTIONAL PART)	1		
6	35340-329-000	SWITCH COMP., FRONT STOP	1		
7	45450-329-010	CABLE COMP., FRONT BRAKE	1		
8	53141-300-010	PIPE, THROTTLE GRIP	1		
9	53167-329-811	HAUSING, THROTTLE WINKER UPPER (OPTIONAL PART)	1		
10	53168-329-811	HAUSING, THROTTLE WINKER LOWER (OPTIONAL PART)	1		
11	53170-329-000	LEVER COMP., RIGHT STEERING HANDLE	1	1063221	D,E,ED,F,G
	53170-329-010	LEVER COMP., RIGHT HANDLE	1		A
12	53171-312-003	BRACKET, RIGHT HANDLE LEVER	1	1063222	D,E,ED,F,G
13	53176-329-000	COVER, RIGHT STEERING HANDLE LEVER	1		
14	53180-286-000	CAP, CONTROL LEVER	1	1063221	D,E,ED,F,G
	53192-312-000	BOLT, CLUTCH CABLE ADJUST	1		A
16	88110-074-000	MIRROR, RIGHT REAR VIEW (OPTIONAL PART)	1		A
	88110-304-621	MIRROR, RIGHT REAR VIEW (OPTIONAL PART)	1		D,E
	88110-323-610	MIRROR, RIGHT REAR VIEW	1		F
	88110-329-730	MIRROR, RIGHT REAR VIEW	1		G
17	90114-329-000	BOLT, HANDLE LEVER PIVOT	1		ED
18	90321-315-670	NUT, FIXING	1		
19	90501-310-000	WASHER, 7X12	1		

FRAME GROUP

F-1 R/H Handle Switch · Cable

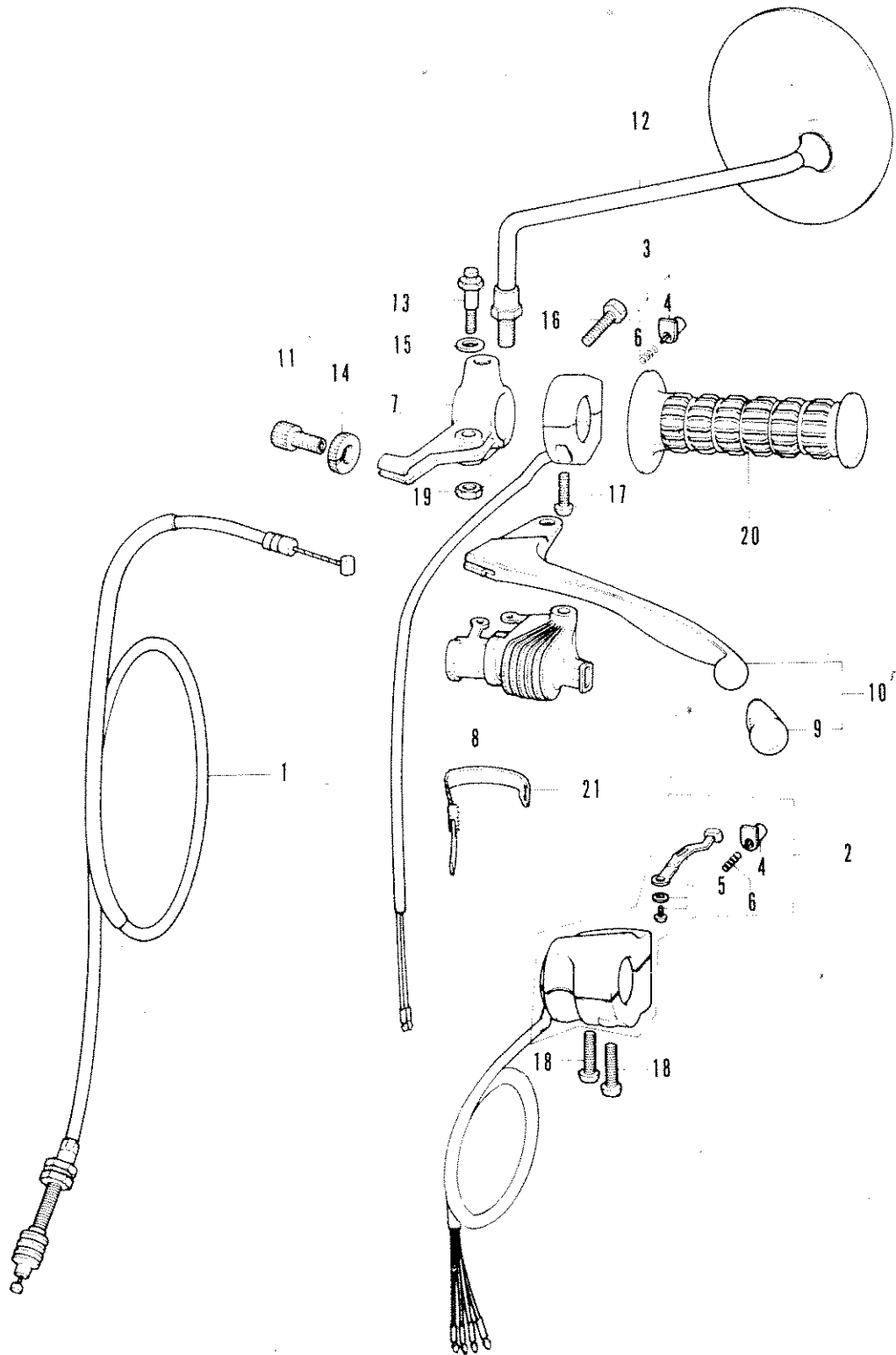


B329-19

F-1 R/H Handle Switch · Cable

Ref. No.	Part No.	Description	Reqd. No. XL250	Serial No.	Area Code
20	92000-06028-02	BOLT, HEX., 6X2 ¹ / ₈ (OPTIONAL PART)	1		
21	92000-10012-0A	BOLT, HEX., 10X12 (OPTIONAL PART)	1		
22	93000-06025	BOLT, HEX., 6X2 ⁵ / ₈	1		
23	93500-05006-0A	SCREW, PAN, 5X6	1		
24	93500-05025-0A	SCREW, PAN, 5X2 ⁵ / ₈	1		
25	93500-05032-0A	SCREW, PAN, 5X3 ² / ₈	1		
26	93500-06025	SCREW, PAN, 6X2 ⁵ / ₈ (OPTIONAL PART)	2		
27	94001-06000	NUT, HEX., 6MM	1		
28	95011-15100	GRIP E, RIGHT HANDLE	1		
29	95014-62100	HAND B1, WIRE	1		

F-2, L/H Handle Switch · Cable



329-20

F-2 L/H Handle Switch - Cable

Ref. No.	Part No.	Description	Reqd. No. XL250	Serial No.	Area Code
1	22870-329-000	CABLE COMP., CLUTCH	1	1062461	D,E,ED,F,G
	22870-356-000	CABLE COMP., CLUTCH	1		A
2	35250-329-003	SWITCH ASSY., TURN SIGNAL HORN (TOYO)	1	1062462	D,E,ED,F,G
			1	1054588	A
3	35250-329-671	SWITCH ASSY., HORN BUTTON	1		D,E,ED,F,G
4	35317-001-310	BUTTON, HORN SWITCH PUSH	1	1054587	A
5	35317-235-000	BUTTON, HORN BUTTON PUSH	1	1054588	A
			1		D,E,ED,F,G
6	35318-259-000	SPRING, HORN BUTTON SWITCH	1		
7	53172-310-010	BRACKET, LEFT HANDLE LEVER	1		
8	53179-329-000	COVER, LEFT STEERING HANDLE LEVER	1		
9	53180-286-000	CAP, CONTROL LEVER	1	1063221	D,E,ED,F,G
			1		A
10	53190-329-000	LEVER COMP., LEFT STEERING HANDLE	1	1063221	D,E,ED,F,G
	53190-329-010	LEVER COMP., LEFT HANDLE	1		A
			1	1063222	D,E,ED,F,G
11	53192-312-000	BOLT, CLUTCH CABLE ADJUST	1		
12	88120-074-000	MIRROR, LEFT REAR VIEW	1		A,D,E
	88120-304-621	MIRROR, LEFT REAR VIEW	1		F
	88120-323-610	MIRROR, LEFT REAR VIEW	1		G
	88120-329-730	MIRROR, LEFT REAR VIEW	1		ED
13	90114-329-000	BOLT, HANDLE LEVER PIVOT	1		
14	90321-315-670	NUT, FIXING	1		
15	90501-310-000	WASHER, 7X12	1		
16	93000-06025	BOLT, HEX., 6X25	1		
17	93500-05016-0A	SCREW, PAN, 5X16	1	1054587	A
18	93500-05025-0A	SCREW, PAN, 5X25	2	1054588	A
			2		D,E,ED,F,G
19	94001-06000	NUT, HEX., 6MM	1		
20	95011-15200	GRIP E, LEFT HANDLE	1		
21	95014-62100	BAND B1, WIRE	1		